



# Universal Electric Motors

## COOLING 2013 MOTOR CATALOGUE



OMNIDRIVE®

Century®

Formerly A.O. Smith Electrical Products Company



Formerly Emerson Motors

ELCO®

INVERTEK  
DRIVES



WE DO MOTORS BEST.



[www.uem.ca](http://www.uem.ca)



## Ultimate Truck Stock Motor™

### Features:

- Suitable for Evaporator & Condenser Applications
- IP 65 Dust Tight with all angle Moisture Protection
- High Efficiency (up to 65%)
- Includes Plug, Speed Nut, Rubber Isolator
- Universal Mounting
- UL/CUL Approved
- Aluminum Frame
- Thermally Protected
- Robust Ball Bearing System
- Replaces: Hussmann, Copeland, Tecumseh, Hill, Tyler, Kysor, Crystal Tips & More..



All Models



▲ Std 3-hole style  
■ Hussmann 4-hole



Dual Side Bosses

### Refrigeration ECM



Stock #	Encl.	Watts	Volts	Amps.	RPM Range	Bearings	Shaft	Rotation
EC5411	IP65	4 - 25	115	0.20 - 0.75	1550 - 1775	Ball	Hubless	CWOSE
EC5412	IP65	4 - 25	115	0.20 - 0.75	1550 - 1775	Ball	Hubless	CCWOSE

### Cross Reference

	Rotom	Morrill	A.O. Smith
EC5411	04-R6711, 04-R6811 04-R9211, 04-R5444	5R016, 5R024, 5R025, 5R020, 5R021	9207F2, 9208F2 9211, 9212, 9213
EC5412	Not Available	Not Available	Not Available

Kit Sold Separately



Kit 58

EC5411  
EC5412

Replaces 51 Frame

Converts 2-pin Straight to 2-pin 90 Degree



Part No. 2117

**Features:**

- Cast Iron Construction
- Dual Side Bosses
- 2-pin Lyall Plug Included
- Up to 65% Efficiency
- Standard 3 Hole & 4 Hole (Husmann Style Mount)
- Replaces 6, 9, 12, 14, 15 & 16 Watt P.S.C. & Low Efficiency Shaded Pole Motors



All Models

Refrigeration ECM



Stock #	Encl.	Watts	Volts	Amps.	RPM	Shaft	Rotation	Replaces
9207F2	T.E.	6 - 9 - 12	115	0.20 - 0.30	1550	Hubless	CWOSE	R6711
9208F2	T.E.	14 - 15 - 16	115	0.47 - 0.58	1550	Hubless	CWOSE	R6811

# ECM Unit Bearing Motors

Energy Efficient Electronically Commutated Brushless DC Motors

**Features:**

- Plastic Body Construction
- IP55 Enclosure
- Foot Mount
- 2-pin Lyall Plug Included
- Up to 70% Efficiency
- Standard 3 Hole & 4 Hole (Husmann Style Mount)
- Replaces 6, 9, 12, 14, 15 & 16 Watt P.S.C. & Low Efficiency Shaded Pole Motors



All Models

Refrigeration ECM



Stock #	Encl.	Watts	Volts	Amps.	RPM	Shaft	Rotation	Replaces
9212	T.E.	6 - 9 - 12	115	0.31	1550	Hubless	CWOSE	ECR01A0102
9213	T.E.	14 - 15 - 16	115	0.41	1550	Hubless	CWOSE	ECT01A0103



# ECM Unit Bearing Motors

Energy Efficient Electronically Commutated Brushless DC Motors



www.uem.ca

## Features:

- Up to 70% Efficiency
- Mounting Shroud & Fan Guard Mounting With Four Extended M4 Threaded Thru-Bolts on Motor Shaft Side
- Reduce Inventories, One Motor Covers 4W Through 16W Applications
- Energy & Cost Saving, Payback In Less Than One Year
- CO<sup>2</sup> Reduction, Eco-Friendly Technology
- Drop In Replacement For Traditional Shaded Pole Unit Bearing Motors
- ECR Motors Are Ideal For Retrofit & New Installations
- Clockwise Opposite Shaft End Rotation, 19" Sleeved Leads With 2 Pin Plug
- Rear Mounting With Three Standard 8-32 UNC Threaded Holes
- Foot Mounting With 4 Threaded 8-32 UNC Holes
- Universal Hubless Shaft Accommodates Standard Axial Fan Blades
- Moisture & Humidity Resistant
- Input Voltage Range For ECR161 Motor Is 90V...140V
- Operating Temperature Range of -10°C to +40°C (14°F to 104°F)
- Automatic Thermal Overload/Electronic Protection
- Fully Enclosed, Long Life Ball Bearings



ECR161

## Refrigeration ECM

OMNIDRIVE®	Stock #	Encl.	Watts	Volts	Amps.	RPM	Shaft	Rotation	Replaces
	ECR161 •	T.E.A.O.	16 Max.	115	0.34	1800	Hubless	CWOSE	Many OEM

# ECM Unit Bearing Motors

## Features:

- Plastic Case Construction
- Totally Enclosed - IP65 Enclosure
- Up to 70% Efficiency
- Moisture Protection
- Standard 4 Thru-Bolt Mounting Style
- All Angle, Continuous Air Duty
- 3-pin 90° Plug, 14" Cord (EC-HE-0147, EC-HE-0170)
- 2-pin 90° Plug, 16" Cord (EC-HE-0176, EC-HE-0182)
- Long-Life Sealed Ball Bearings
- Replaces 10, 12 & 15 Watt Arneg & Hill Phoenix Motors



EC-HE-0147 - EC-HE-0176  
EC-HE-0182



EC-HE-0170

## Refrigeration ECM



Stock #	Encl.	Watts	Volts	Amps.	RPM	Shaft	Rotation	Replaces
EC-HE-0147 •	T.E.	12	115	0.18	1450	Hubless	CWOSE	3441001, 24681010
EC-HE-0170 •	T.E.	12	115	0.18	1450	Hubless	CWOSE	34410012
EC-HE-0176 •	T.E.	15	115	0.22	1600	Hubless	CWOSE	P078449H
EC-HE-0182 •	T.E.	10	115	0.19	1550	Hubless	CWOSE	P079441C, P066237A

**Features:**

- Shaded Pole Design
- Cast Iron Construction
- Totally Enclosed



All Models

Unit Bearings

<i>OMNIDRIVE</i>	Stock #	Encl.	Watts	Volts	Amps.	RPM	Shaft	Rotation	Replaces
	SS5211	T.E.	4	115	0.29	1550	Hubless	CWLE	EE5211
	SS5311	T.E.	6	115	0.40	1550	Hubless	CWLE	EE5311
	SS5411	T.E.	9	115	0.55	1550	Hubless	CWLE	EE5411
	SS5611	T.E.	9	115	0.55	1550	Hubless	CWLE	EE5611
	SS5811	T.E.	16	115	1.00	1550	Hubless	CWLE	EE5811

**Features:**

- Shaded Pole Design
- Cast Iron Construction
- Open Enclosure



250 - 252 - 254 - 256

258 - 260

276

Unit Bearings

<i>Century</i>	Stock #	Encl.	Watts	Volts	Amps.	RPM	Shaft	Rotation	Replaces
<small>Formerly A.O. Smith Electrical Products Company</small>	250	O.O.S.E.	25	115	1.10	1500	Hubless	CWLE	R2511
	252	O.O.S.E.	25	230	0.60	1500	Hubless	CWLE	R2512
	254	O.O.S.E.	35	115	1.40	1500	Hubless	CWLE	R3511
	256	O.O.S.E.	35	230	0.70	1500	Hubless	CWLE	R3512
	258	O.O.S.E.	50	115	1.70	1500	3/8" x 1-1/2"	CWLE	R5011
	260	O.O.S.E.	50	230	0.85	1500	3/8" x 1-1/2"	CWLE	R5012
	276	O.S.E.	50	230	0.85	1500	5/16" x 2-1/2"	CCWLE	R5122



### Features:

- Open Fan Cooled
- Shaded Pole Design
- Sleeve and Ball Bearings



All Other Models



9336



SS671 - SS672



SS1332



671B - 672B



981

## G.E. 11 Frame Replacements



Stock #	Encl.	HP	Volts	Amps.	RPM	Shaft	Rotation	Replaces
9656	O.F.C.	1/40	115	1.20	1550	5/16" x 1-1/4"	CWOSE	GE-1531
9657	O.F.C.	1/40	115	1.20	1550	5/16" x 1-1/4"	CCWOSE	GE-1541
9658	O.F.C.	1/40	208-230	0.60	1550	5/16" x 1-1/4"	CWOSE	GE-1532
9659	O.F.C.	1/40	208-230	0.60	1550	5/16" x 1-1/4"	CCWOSE	GE-1542
9653	O.F.C.	1/30	115	1.60	1550	5/16" x 1-1/4"	CWOSE	GE-1431
9654	O.F.C.	1/30	208-230	0.80	1550	5/16" x 1-1/4"	CWOSE	GE-1432
9655	O.F.C.	1/30	208-230	0.80	1550	5/16" x 1-1/4"	CCWOSE	GE-1442
9660	O.F.C.	1/20	115	2.00	1550	5/16" x 2.00"	CWOSE	GE-1331
9661	O.F.C.	1/20	115	2.00	1550	5/16" x 2.00"	CCWOSE	GE-1341
9662	O.F.C.	1/20	208-230	1.00	1550	5/16" x 2.00"	CCWOSE	GE-1342
9663	O.F.C.	1/20	208-230	1.00	1550	5/16" x 1-1/4"	CWOSE	GE-1016
9664	O.F.C.	1/20	208-230	1.00	1550	5/16" x 2.00"	CWOSE	GE-1332
9336 •	O.F.C.	1/20	230	1.10	1550	5/16" x 2-5/8"	CWOSE	GE-1336
SS1332 •	O.F.C.	1/20	208-230	1.10	1550	5/16" x 2.00"	CCWSE	GE-1332
SS671 •	O.F.C.	1/15	115/208-230	2.10/1.10	1550	5/16" x 2.00"	CCWSE	GE-1231
SS672 •	O.F.C.	1/15	115/208-230	2.10/1.10	1550	5/16" x 2.00"	CWSE	GE-1441
9665	O.F.C.	1/15	208-230	1.00	1550	5/16" x 1-1/4"	CWOSE	GE-1232
671B •	O.F.C.	1/15	115/208-230	2.10/1.10	1550	5/16" x 2.00"	CWOSE	GE-1231
672B •	O.F.C.	1/15	115/208-230	2.10/1.10	1550	5/16" x 2.00"	CCWOSE	GE-1441
981	O.F.C.	1/15	460	0.60	1550	5/16" x 2-1/2"	CCWSE	810F050B

**Features:**

- Impedance or Thermally Protected
- Continuous Duty, Air Over
- Mechanically Reversible
- Class 'B' Insulation



'C' Frame Skeleton

SS617

SS635

SS3670

SS3100

OMNIDRIVE®

Stock #	Stack	Volts	Amps.	RPM	Shaft	Rotation	Replaces
SS617	3/8	208-240	0.22	1900	3/16" x 1-1/4"	CWSE	R617
SS635	1-1/2	208-240	1.20/0.83	1550	1/4" x 1-1/2"	CCWSE	R635
SS3670	5/8	120/240	0.40/0.26	3000	3/16" x 1-9/16"	CWSE	R3670
SS3100	5/8	115	0.59	3000	7/32" x 1-11/16"	CCWSE	R3100, C01550 EM550, VFM100 SM550, C65878

3.3" Diameter Motors



SS101 - SS103

SS313 - SS360 - SS368

SS358 - SS359

SS369

**Features:**

- Open & Totally Enclosed Construction
- Shaded Pole & P.S.C. Design
- Sleeve and Ball Bearings



SS370 - SS371

SS574 - SS575

SS9721

3.3" Diameter

OMNIDRIVE®

Stock #	Encl.	HP	Volts	Amps.	RPM	Shaft	Rotation	Replaces
SS101	T.E.	1/45	115	0.90	1550	Hubless	CCWSE	R101
SS103	T.E.	1/45	115	0.90	1550	Hubless	CWSE	R103
SS313 ●	OPEN	1/15	115	2.20	1550	5/16" x 3.00"	CWSE	R313
SS358	OPEN	1/20	115	2.00	1550	5/16" x 3.20"	CWSE	R358
SS359	OPEN	1/20	230	1.10	1550	5/16" x 3.20"	CWSE	R359
SS360	OPEN	1/30	115	1.20	1550	1/4" x 1.75"	CCWSE	R360
SS368	OPEN	1/20	115	1.80	1550	5/16" x 2.80"	CCWSE	R368
SS369	OPEN	1/20	230	0.95	1550	5/16" x 2.75"	CCWSE	R369
SS370 ●*	OPEN	1/20	115	0.80	1550	5/16" x 2.80"	CCWSE	R370
SS371 ●*	OPEN	1/20	230	0.30	1550	5/16" x 2.80"	CCWSE	R371
SS574	OPEN	1/20	120	1.90	1550	5/16" x 2.50"	CCWSE	R90574
SS575	OPEN	1/20	208-230	0.89	1550	5/16" x 2.50"	CCWSE	R90575
SS9721 ●*	OPEN	1/12	115/208-230	1.10 / 0.60	1550	5/16" x 3.15"	REV.	R90721

(●) Ball Bearing (\*) P.S.C. Design





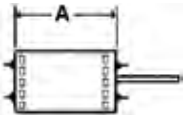
# Ultimate Truck Stock Motor™

**Features:**

- High Efficiency P.S.C. Design
- Uses Over 40% Less Electricity than Shaded Pole Designs
- Four 8-32 x 3/4" Stud Extensions at each end
- Automatic Reset Thermal Overload Protector
- Capacitor Included
- Reversing Leads
- Ball Bearings have all Angle Thrust System
- 15" Cord & Plug (0.250" pin pitch) Includes Adapter for 0.375" pin pitch



All Models



3.3" Diameter



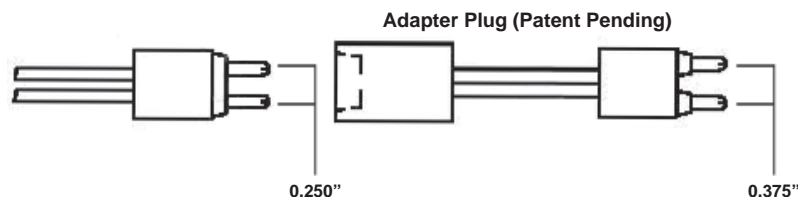
Stock #	Incl.	HP	Volts	Amps.	RPM	"A" Dim.	Shaft	Rotation
NEW EM-9662 ●*	OPEN	1/20	115	0.85	1550	3.26"	5/16" x 3.00"	REV.
NEW EM-9656 ●*	OPEN	1/15	208-230	0.48	1550	3.78"	5/16" x 3.00"	REV.

### Cross Reference

	Rotom	Bohn	A.O. Smith	Fasco
EM-9662	R90721, R358, R1052, R368 R90572, R90574	5001L, 5008S, 5004L 5034L, 5034LS, 5008SS	574A, 574	D1124, D1101
EM-9656	R90721, R359, R1053, R369 R90573, R90575, R91125	7190-0442, 25309101 5008T, 5034M, 5034MS 5008TS	573A, 575	D1126, D1125, D1103 D1122, D1123

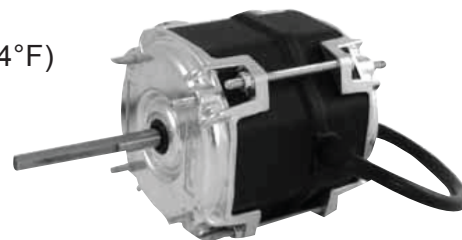
	Blanchard-Ness	Larkin	Packard	Ref Plus
EM-9662	E1052	253-1194, 25309101 7163-2113, JA2N015N	41101, 41154, 45036 41124, 45008S, 49101	RMT0011
EM-9656	E1053	253-1195, 25309101 7163-3371, 7163-2135 JA2N016N	41103, 41195, 41126 45008T, 41125, 49101	RMT0012





**Features:**

- Up to 70% Efficiency
- Energy & Cost Saving, Payback In Less Than One Year
- CO<sup>2</sup> Reduction, Eco-Friendly Technology
- Drop In Replacement For Traditional Shaded Pole & P.S.C. Evaporator Fan Motors
- Flexible Mounting With Four Extended 8-32 UNC Threaded Thru-Bolts on 2.84" B.C.D. at Both Ends
- Clockwise Shaft End Rotation, 19" Sleeved Leads With 2 Pin Plug
- Standard 5/16" Shaft Diameter, 2-1/2" Length With 1-3/4" Flat
- Moisture & Humidity Resistant, IP42 Enclosure Rating
- Operating Temperature Range of -30°C to +40°C (-22°F to 104°F)
- Input Voltage Range For ECR501 Motor is 100V...127V  
ECR502 Motor is 190V...254V
- Fully Enclosed, Long Life Ball Bearings
- Automatic Thermal Overload/Electronic Protection



All Models

3.3" Diameter

OMNIDRIVE®	Stock #	Encl.	Watts	Volts	Amps.	RPM	Shaft	Rotation	Replaces
	ECR501	T.E.A.O.	50	115	1.13	1550	5/16" x 2-1/2"	CWSE	Many OEM
	ECR502	T.E.A.O.	50	208-230	0.67	1550	5/16" x 2-1/2"	CWSE	Many OEM

**ECM Evaporator Fan Motors**

**Features:**

- 4 Bolts on Shaft End on 2.86" B.C.D.
- Lyall Plug Included
- Up to 65% Efficiency
- Replaces Heatcraft, Bohn, Larkin, Chandler & Climate Control ECM Evaporator Motors



All Models

42 Frame



Stock #	Encl.	HP	Volts	Amps.	RPM	Shaft	Rotation	Replaces
9215L	T.E.	1/15, 1/20, 1/25	115	1.20	1625	5/16" x 2.90"	CWSE	22617801, 22618001 25307801, 25308001
9215H	T.E.	1/15, 1/20, 1/25	230	0.70	1625	5/16" x 2.90"	CWSE	22617701, 22617901 25307701, 25307901



**Features:**

- Shaded Pole Design
- Sleeve Bearings
- Replacements for Reversomatic & Intercity



SS630



SS260 - SS262- SS264



SS266



SS2603 - SS2604



SS2605



SS2609 - SS2612

OEM Replacements

OMNIDRIVE®

Stock #	Encl.	HP	Volts	Amps.	RPM	Shaft	Rotation	Replaces
SS630	OPEN	---	120	0.75	3000	7/32" x 1-13/16"	CCWSE	R630
SS260	T.E.	1/90	115	0.60	1500	5/16" x 1.09"	CCWSE	R260
SS262	T.E.	1/40	115	1.10	1550	5/16" x 1-1/2"	CCWSE	R262
SS264	T.E.	1/75	120	0.70	1550	5/16" x 2.06"	CCWSE	R264
SS266	T.E.	1/20	120	1.45	1550	5/16" x 1.40"	CCWSE	R266
SS2603	OPEN	1/35	115	1.15	1550	1/2" x 2.10"	CCWSE	R2603
SS2604	OPEN	1/10	120	2.65	1550	1/2" x 2.05"	CCWSE	R2604
SS2605	OPEN	1/12	115	3.00	1050	1/2" x 1.98"	CCWSE	R2605
SS2609	T.E.	1/30	115	1.21	1550	1/2" x 2.35"	CCWSE	R2609
SS2612	T.E.	1/30	115	1.21	1550	1/2" x 2.35"	CWSE	R2612

## Fan Coil Motors

**Features:**

- P.S.C. Design
- Capacitor Included
- Sleeve Bearings
- Replacements for Temspec, Unilux, Climetec & Snyder-General



All Models

42 & 48 Frame

OMNIDRIVE®

Stock #	Encl.	HP	Volts	Amps.	RPM	Shaft	Rotation	Replaces
SS799 *	OPEN	1/8	115	2.10	1000/5	1/2" x 5.00"	CWSE	DD-029
SS2799 *	OPEN	1/6	115	2.60	950/5	1/2" x 4.40"	CWSE	DD-030



# ECM Fan Coil Replacement

**Features:**

- Energy Efficient ECM Technology
- ECM with Internal Control
- Up to 65% Efficiency vs. Low Efficiency Shaded Pole
- Rotors are Isolated from Shaft to Reduce Motor Vibration
- Saves an Average of 69% on Energy Usage
- Double Shaft
- Open Construction
- Resilient Base
- 54" Leads
- Runs Cooler
- Easy to Install
- Long Life Ball Bearings



42 Frame ECM

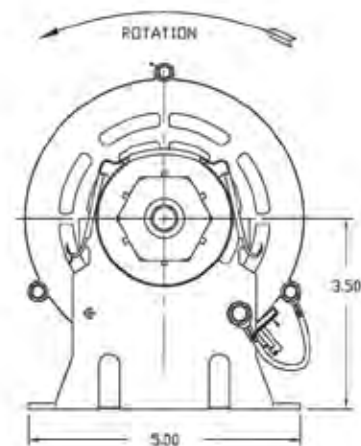
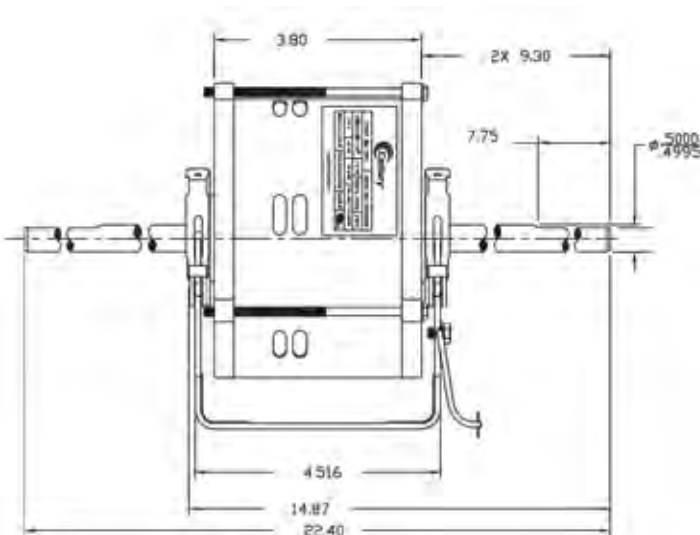
CS89



Formerly A.O. Smith Electrical Products Company

Stock #	Encl.	HP	Volts	Amps.	RPM	Shaft	Rotation
CS89 •	OPEN	1/10	115	1.56	1100/3	9.30" x 1/2" x 9.30"	CWLE

Replaces many Shaded Pole & P.S.C. Motors  
In Fan Coil, PTACS & Air Conditioners



(•) Ball Bearing



### Features:

- Shaded Pole & P.S.C. Design
- Open Construction
- Double Shaft
- Resilient Base
- Sleeve Bearings



42 Frame



Formerly A.O. Smith Electrical Products Company



Stock #	Encl.	HP	Volts	Amps.	RPM	Shaft	Rotation
89	OPEN	1/10	115	3.20	1050/5	10-11/16" x 1/2" x 10-11/16"	DBL
UE89P *	OPEN	1/10	115	2.50	1050/5	10-1/2" x 1/2" x 10-1/2"	DBL
93V1	OPEN	1/10	115	3.20	1050/5	10" x 3/8" x 10"	DBL
320	OPEN	1/15	208-230	1.30	1050/3	8-7/8" x 1/2" x 8-7/8"	DBL
362 *	OPEN	1/10	115	1.70	1075/4	10-11/16" x 1/2" x 10-11/16"	DBL
381 *	OPEN	1/10	208-230	0.81	1075/3	10-11/16" x 1/2" x 10-11/16"	DBL
953 *	OPEN	1/15	115	0.80	1100/3	10-1/2" x 1/2" x 10-1/2"	DBL
945A *	OPEN	1/8	115	1.20	1500/3	9" x 1/2" x 7-1/2"	DBL
955 *	OPEN	1/6	115	2.00	1500/3	10-1/2" x 1/2" x 10-1/2"	DBL
UE955 *	OPEN	1/6	115	2.30	1500/3	10-1/2" x 1/2" x 10-1/2"	DBL
954 *	OPEN	1/30	115	0.60	1100/3	1/2" x 8-1/2"	CCWSE
9608 *	OPEN	1/20	115	0.60	1100/3	1/2" x 9-1/2"	REV.

# Fan Coil Motors

### Features:

- P.S.C. Design
- Double Shaft
- IP20 Protection
- Class 'B' Insulation
- Thermal Protection
- Capacitor Included
- Open End-Shields Enclosure
- Base Mount Included
- Ball Bearings



All Models

42 Frame



Stock #	Model	Frame	HP	Amps.	Cap. (MFD/V)	RPM	Shaft
EC-FC-1893 ●*	3RGBU 50-30-6V/1	4.0"	1/15	0.96	6.3/450	1550/6	7.75" x 1/2" x 7.75"
EC-FC-1895 ●*	3FGBU 210-51-6V/1	4.8"	1/4	3.80	18/450	1550/6	7.75" x 1/2" x 7.75"



**Features:**

- Shaded Pole & P.S.C. Design
- Capacitor Included
- Open Air-Over Design
- Wiring Harness w/Plug Supplied
- Long Life Self Aligning Sleeve & Sealed Ball Bearings



**OEM Replacements**

OMNIDRIVE®	Stock #	Diameter	HP	Volts	Amps.	RPM	Shaft	Rotation	Replaces
	56342	3.3"	1/70	115	1.00 / 0.50	1550/2	3/8" x 5-1/2"	CWSE	56342-0
	56343	3.3"	0.27	115	1.32	1550/2	3/8" x 5-3/4"	CWSE	56343-0, JA2M414
	56344 ●*	3.3"	0.08	115	1.60 / 1.00	1550/2	3/8" x 4.75"	CWSE	56344-0, JE2H047
New	56345 *	3.3"	1/25	115	1.00	1050	3/8" x 4.75"	CWSE	56345-0
	56346 ●*	3.3"	0.27	115	3.20 / 1.90	1550/2	3/8" x 5.50"	CWSE	56346-0, JE2K007
	56347 ~*	3.3"	1/12	115	1.60	1050	6.10" x 3/8" x 6.10"	CCWLE	56347-0
New	56348 ~	5.0"	1/10	115	3.90	1050	6-1/4" x 1/2" x 6-1/4"	CCWLE	56348-0
New	60024	3.3"	1/30	115	1.40	1550	5/16" x 1-1/2"	CWSE	60024-0
New	60030	3.3"	1/80	115	0.74	1400	1/4" x 1-3/4"	CWSE	60030-0
New	60076 ●*	5.5"	1/6	115	3.40	1300/2	1/2" x 2.65"	CWSE	60076-0
New	63699 ●*	5.5"	1/4	115	3.40	1725	1/2" x 4.77"	CWSE	63699-0
	63745 *	3.3"	1/30	115	0.50 / 0.40	1550/2	3/8" x 3.69"	CWSE	63745-0
	63746 ●*	3.3"	1/12	115	1.50 / 0.90	1550/2	3/8" x 3.40"	CWSE	63746-0, JE2H057
	63747 *	4.4"	1/7	115	2.50	1550/3	1/2" x 2.20"	CWSE	63747-0
	63748 *	4.4"	1/6	115	1.80	1550/3	1/2" x 2.60"	CWSE	63748-0
New	63749 ●*	5.5"	1/4	115	2.80	1725	1/2" x 3.00"	CWSE	63749-0
New	63750 ●*	5.5"	1/3	115	4.00	1550/3	1/2" x 5.55"	CWSE	63750-0
New	63751 ●*	5.5"	1/2	120	5.00	1650/2	1/2" x 5.50"	CWSE	63751-0
New	63752 ●*	5.5"	3/4	115	8.60 / 9.60	1625	1/2" x 5.33"	CWSE	63752-0
	63821 ●*	5.0"	1/4	115	2.70	1550	1/2" x 2.60"	CCWSE	63821-0

(●) Ball Bearing (\*) P.S.C. Design (-) Double Shaft

New Product



## OEM Replacements

**OMNIDRIVE®**

Stock #	Encl.	HP	Volts	Amps.	RPM	Shaft	Rotation	Replaces
11811 *	OPEN	1/6	120	2.10	1630/2	3/8" x 1.90"	CCWSE	Venmar/ VanEE
12026 •*	OPEN	1/8	120	1.89	1630	2.93" x 3/8" x 2.93"	CWLE	Venmar/ VanEE
12027 *	OPEN	1/12	120	1.20	1625/3	3.50" x 3/8" x 3.56"	CWLE	Venmar/ VanEE
SS348 *	OPEN	1/15	115	1.30	1550/2	3/8" x 3.00"	CWSE	Venmar/ VanEE
SS438 *	OPEN	1/14	115	1.46	1625/2	5/16" x 1.88"	CCWSE	Venmar/ VanEE
SS462 *	OPEN	1/12	120	1.20	1625/3	3.50" x 3/8" x 3.56"	CWLE	Venmar/ VanEE
950-1020	OPEN	1/25	115	1.37	3000	5/16" x 2-1/4"	CCWSE	Tjernlund
950-1021 *	OPEN	1/7	115	1.50	3300	3/8" x 2.25"	CCWSE	Tjernlund
950-1022 •*	OPEN	1/5	115	2.80	1700	1/2" x 3.40"	CCWSE	Tjernlund
SS2224	OPEN	1/114	115	0.75	1500/2	3/8" x 2-3/4"	CWSE	Loren Cook
SS2497	OPEN	1/10	115	3.40	1100	1/2" x 1-5/8"	CWSE	Lomanco
SS2655 •*	OPEN	1/12	120	1.34	1550	3/8" x 2.82"	CCWLE	Nutech
SS3234	OPEN	1/16	115	2.20	1550/2	3/8" x 2-1/2"	CWSE	Loren Cook
SS4200	OPEN	1/23	115	1.50	1500	3/8" x 2-3/4"	CWSE	Loren Cook
SS5200 *	OPEN	1/16	115	1.50	1500	3/8" x 2-1/4"	CWSE	Loren Cook
SS6264	OPEN	1/11	115	4.60	1500/2	1/2" x 6-1/4"	CWSE	Loren Cook
SS7274 *	OPEN	1/4	115	3.90	1625/2	1/2" x 6-1/4"	CWSE	Loren Cook
SS8318 *	OPEN	1/8	115	2.60	1550/3	1/2" x 2-3/4"	CCWSE	Greenheck
SS9316	OPEN	---	115	3.40	1100	1/2" x 3-7/8"	CWSE	Broan
SS9317	OPEN	---	115	4.30	1100	1/2" x 3-7/8"	CWSE	Broan
30080058	OPEN	1/100	115	0.61	1050	5/16" x 1-7/8"	CCWSE	Broan
30080135 *	OPEN	1/10	120	1.80	1050	1/2" x 2-3/8"	CWSE	Broan



**Features:**

- All Angle Mount
- Continuous Duty, Air Over
- Class 'B' Insulation
- Shaded Pole
- Thermally Protected
- Single & Two Speed Models
- Sleeve Bearings



UB1



UB3



UB160



UB265



UB465



UFB500

3.3" Diameter

OMNIDRIVE®

Stock #	CFM	Volts	Amps.	RPM	Comments	Replaces
UB1	200	115	1.20	3000	6' Cord & Plug	RB1
UB3	100	120	0.80	3000	6' Cord & Plug	RB3
UB160	160	115	1.10	1550	Leads - No Conduit Box	RB160
UB265	265	115	1.40	1630	Conduit Box	RB265
UB465	465	115	2.60	1550/2	2 Speed, Conduit Box, Heat Sink	RB465
UFB500	140	120	1.10	2860	Conduit Box	RFB500

## Inline Centrifugal Fans

**Features:**

- Installs in any Position
- High Pressure & Volume
- 8 Foot Cord & w/Plug Supplied
- Mounting Bracket Included
- Backwards Inclined Fan Blades
- Steel Housing, Baked Powder Coat Finish
- Permanently Sealed Ball Bearings
- Three Year Warranty



All Models

OMNIDRIVE®

Stock #	Duct Diameter	CFM	Watts	Volts	Amps.	Hz.	dBA
VENT-100 ●	4 INCH	175	98	120	0.97	60	0.90
VENT-150 ●	6 INCH	435	130	120	0.97	60	1.00
VENT-200 ●	8 INCH	745	210	120	1.76	60	1.90
VENT-250 ●	10 INCH	785	230	120	2.00	60	1.90
VENT-315 ●	12 INCH	1075	295	120	2.50	60	2.60

(●) Ball Bearing

# Universal Multi-Rated Motor Run Capacitors

## Features:

- Easily Fitted, Simply Follow Instructions
- Reduces Inventory by Replacing over 20 Types of Single Value Capacitors
- Service Technicians only need to keep one on board their truck.
- Protected to 10,000 AFC
- Plug & play to make up the capacitance you need
- Voltage rating of 370vac or 440vac
- CSA C22.2 No.190, UL File No. E311209
- 5 Year Warranty

## Specifications:

- 12.5mfd combined total capacitance
- 2.5/5.0/5.0mfd
- 370VAC or 440VAC, 50-60Hz
- Operating temperature range -40°C to +70°C



Stock # mmmnicap20



Stock # municap200

## Features:

- Quick-Acting Double Safety Interrupter
- Reduces Inventory by Replacing over 200 Types of Single and Dual Value Capacitors
- Protected to 10,000 AFC
- Plug & play to make up the capacitance you need
- Voltage rating of 370vac or 440vac
- CSA C22.2 No.190, UL File No. E311209
- 5 Year Warranty

## Specifications:

- 67.5mfd combined total capacitance
- 2.5/5.0/5.0/10.0/20.0/25.0mfd
- 370VAC or 440VAC, 50-60Hz
- Operating temperature range -40°C to +70°C

# Masterfit<sup>®</sup> Pro

**Features:**

- P.S.C. Design
- Energy Efficient
- Multi-Tap Capacitor Included
- Resilient Rings
- 40°C Ambient
- Reversible Rotation
- Open Drip-Proof Construction
- Class 'B' Insulation
- Extended Thru Bolts
- Rheem Mounting Holes in Shell
- Sleeve and Ball Bearings



All Models

48 Frame - Five Speed



Stock #	Encl.	HP	Volts	Amps.	RPM	Shaft	Rotation	Replaces
FDL6001A *	OPEN	1/2	115	7.00	1075/5	1/2" x 5.00"	REV.	R43600
FD6000A *	OPEN	1/2	208-230	3.90	1075/5	1/2" x 5.00"	REV.	R43601
FDL6002A •*	OPEN	3/4	115	9.10	1075/5	1/2" x 5.00"	REV.	R43602
FD6001A •*	OPEN	3/4	208-230	3.90	1075/5	1/2" x 5.00"	REV.	R43603

Cross Reference

	Emerson	Genteq	Marathon	Fasco
FDL6001A	5460	3463	X077	D2835
FD6000A	5461	3464	X073	D833
FDL6002A	5470	3466	X074	D2832
FD6001A	5471	3467	X075	D2833



Multi-Tap Capacitor (Included)

- Multi-Tap Capacitor
- 5, 7.5, 10, 12.5 & 15 MFD
- 370VAC
- 50-60HZ.



Part No. 2116

- Round Capacitor Bracket
- Available Separately

(•) Ball Bearing (\*) P.S.C. Design





**Features:**

- Resilient Rings Included
- Reversing Plug
- Extended Thru Bolts
- Thermally Protected
- 40°C Ambient Rating
- Long Life Self-Aligning Sleeve Bearings



EM-1390 - EM-1391



All OmniDrive Models



EM-8906 - EM-8907

**42 Frame - Three Speed**



Formerly Emerson Motors

Stock #	Encl.	HP	Volts	Amps.	RPM	Shaft	Rotation	Replaces
EM-1390	OPEN	1/4	115	2.80	1075/3	1/2" x 4.00"	REV.	D150
EM-1391	OPEN	1/4	208-230	1.50	1075/3	1/2" x 4.00"	REV.	D151

**48 Frame - Three Speed**



Formerly Emerson Motors

Stock #	Encl.	HP	Volts	Amps.	RPM	Shaft	Rotation	Replaces
SS3583	OPEN	1/4	115	4.20	1075/3	1/2" x 4-1/2"	REV.	DD-3583
SS3584	OPEN	1/4	208-230	2.00	1075/3	1/2" x 4-1/2"	REV.	DD-3584
SS1314	OPEN	1/3	115	6.00	1075/4	1/2" x 5-1/8"	CCWLE	DD-1314 F1314D
SS3585	OPEN	1/3	115	5.50	1075/3	1/2" x 4-1/2"	REV.	DD-3585
SS3586	OPEN	1/3	208-230	2.80	1075/3	1/2" x 4-1/2"	REV.	DD-3586
SS3587	OPEN	1/2	115	7.50	1075/3	1/2" x 4-1/2"	REV.	DD-3587
SS3588	OPEN	1/2	208-230	3.60	1075/3	1/2" x 4-1/2"	REV.	DD-3588
SS3589	OPEN	3/4	115	10.20	1075/3	1/2" x 4-1/2"	REV.	DD-3589
SS3590	OPEN	3/4	208-230	5.50	1075/3	1/2" x 4-1/2"	REV.	DD-3590
EM-8906 •	OPEN	1	115/230	12.30	1075/3	1/2" x 6-7/16"	REV.	R42812
EM-8907 •	OPEN	1	208-230	5.10	1075/3	1/2" x 6-7/16"	REV.	R42023

**Features:**

- Fits 9" & 10" Bolt Circle Diameter
- Reversing Plug
- Thermally Protected
- 40°C Ambient Rating
- Long Life Self-Aligning Sleeve Bearings



All Models

**48 Frame - Four Speed**



Stock #	Encl.	HP	Volts	Amps.	RPM	Shaft	Rotation	Replaces
SS752	OPEN	1/4	115	3.60	1075/4	1/2" x 6.00"	REV.	DD-034
SS753	OPEN	1/3	115	4.80	1075/4	1/2" x 6.00"	REV.	DD-035
SS754	OPEN	1/2	115	8.20	1075/4	1/2" x 6.00"	REV.	DD-036
SS973	OPEN	1/3	208-230	2.30	1075/4	1/2" x 6.00"	REV.	DD-045
SS974	OPEN	1/2	208-230	3.80	1075/4	1/2" x 6.00"	REV.	DD-046



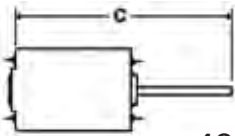
# Ultimate Truck Stock Motor™

**Features:**

- High Efficiency P.S.C. Design
- Extended Mounting Studs
- Designed for Use With 370V Capacitors
- Class 'B' Insulation
- 36" Leads
- Includes Side Shell Holes For Rheem Units
- Continuous Duty, Air Over
- Reversible Rotation
- Automatic Reset Thermal Overload Protector
- 2.5" Diameter Hub Rings Included
- Sleeve and Ball Bearings



All Models



48 Frame - Four Speed



Stock #	Encl.	HP	Volts	Amps.	RPM	"C" Dim.	Shaft	Rotation
EM-5469 *	OPEN	1/3	208-230	2.40	825/4	6.74"	1/2" x 2.20"	REV.
EM-5460 *	OPEN	1/2	115	7.30	1075/4	9.80"	1/2" x 5.00"	REV.
EM-5461 *	OPEN	1/2	208-230	3.60	1075/4	9.80"	1/2" x 5.00"	REV.
EM-5470 ●*	OPEN	3/4	115	8.10	1075/4	11.60"	1/2" x 5.00"	REV.
EM-5471 ●*	OPEN	3/4	208-230	4.10	1075/4	11.60"	1/2" x 5.00"	REV.

**Cross Reference**

	Rotom	Genteq	A.O. Smith	Marathon	Fasco
EM-5469	N/A	N/A	N/A	N/A	N/A
EM-5460	R6-R43600	3463	FDL6001A	X077	D2835
EM-5461	R6-R43601	3464	FD6000A	X073	D833
EM-5470	R6-R43602	3466	FDL6002A	X074	D2832
EM-5471	R6-R43603	3467	FD6001A	X075	D2833

(●) Ball Bearing (\*) P.S.C. Design



# RESCUE EcoTech®

**Features:**

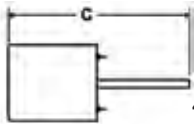
- Electronically Controlled Brushless Permanent Magnet Motor
- Up to 82% Efficiency
- Saves 25% of the Watts in A/C or Heating
- 75% Watt Reduction in Circulation Mode
- Easy Voltage Change from 230V to 115V
- Electronically Protected Motor
- Continuous Duty, Air Over
- No Capacitor Required
- 6000V Surge Protection
- Reversible Rotation
- Class 'B' Insulation
- 36" Leads
- 40°C Ambient
- Ball Bearings



All Models



Actual connections may vary



48 Frame - Five Speed



Stock #	Encl.	HP Range	Volts	Amps.	RPM	"C" Dim.	Shaft	Rotation
NEW EM-5522ET •	OPEN	1/3 - 1/5	115 / 230	4.02 / 2.70	1075/5	9.75"	1/2" x 4.50"	REV.
NEW EM-5532ET •	OPEN	1/2 - 1/4	115 / 230	6.20 / 3.90	1075/5	9.75"	1/2" x 4.50"	REV.
NEW EM-5542ET •	OPEN	3/4 - 1/3	115 / 230	8.50 / 5.20	1075/5	10.75"	1/2" x 4.50"	REV.
NEW EM-5552ET •	OPEN	1 - 1/2	115 / 230	11.50 / 6.90	1075/5	11.25"	1/2" x 4.50"	REV.

## Cross Reference

	Rotom	Genteq	Mars	A.O. Smith
EM-5522ET	N/A	6103E *	N/A	N/A
EM-5532ET	R6-R75531 R6-R755301	6105E *	06005	CSL1056 CS1056
EM-5542ET	N/A	6107E *	N/A	N/A
EM-5552ET	R6-R75551 R6-R755501	6110E *	06010	CSL1106 CS1106

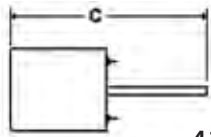
(\* 115 Volt Only)

- **Fits a Wide Variety of Applications** – The fully reversible motor comes in a range of horsepower sizes to fit your market and is dual voltage so you can provide an indoor blower solution to all your customers.
- **Quiet, Efficient Circulation Speed** – With a low 600 RPM circulation speed, your customers can cycle air continuously without the noise, draft or electricity cost of a PSC motor. Often using less energy than a 100 watt bulb. Up to 75% watts savings are typical.
  - **Active Airflow Management** – The advanced motor control reacts to change in static pressure, helping to maintain airflow as vents are closed or the filter becomes dirty.
  - **Very Energy Efficient** – The RESCUE EcoTech motor is up to 25% more electrically efficient at high speed compared to a standard blower motor. 75% watt reduction in circulation mode.



**Features:**

- Single Phase P.S.C.
- Thermally Protected
- Reversible Rotation
- 36" Leads
- Continuous Duty, Air Over
- Extended Mounting Studs
- High Efficiency Design
- Ball Bearings



42 Frame



All Models



Stock #	Encl.	HP Range	Volts	Amps.	RPM	"C" Dim.	Shaft	Rotation
9722 ●*	T.E.	1/8 - 1/12	208-230	0.90	1075	7.50"	1/2" x 3.00"	REV.
9723 ●*	T.E.	1/4 - 1/6	208-230	2.00	1075	7.50"	1/2" x 3.00"	REV.
9724 ●*	T.E.	1/4 - 1/6	208-230	1.60	1625	7.50"	1/2" x 3.00"	REV.

Motor Mount Brackets & Capacitors



Accessories

Stock #	Description
1330A	Rain Shield for 1/2" Shaft
1383A	Rain Shield for 5/8" Shaft
Flex 50	5" (42 Frame) 9" & 10" B.C.D.
Flex 55	5-5/8" (48 Frame) 9" & 10" B.C.D.
1479	Heavy Duty 5-5/8" (48 Frame) 10" B.C.D
1495	Heavy Duty 5-5/8" (48 Frame) 11" B.C.D
1482A	Capacitor Mounting Bracket & Rubber Cover
POC5-1	5mfd / 370V. Oval Case
POC7.5-1	7.5mfd / 370V. Oval Case
POC10-1	10mfd / 370V. Oval Case
POC15-1	15mfd / 370V. Oval Case

(●) Ball Bearing (\*) P.S.C. Design



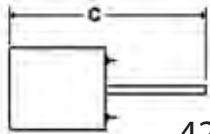
# Ultimate Truck Stock Motor™

**Features:**

- High Efficiency P.S.C. Design
- EZ-FIT® Mounting System to Cover 4.3", 4.4" or 4.6" Bolt Circle Mounts
- High 70°C (158°F) Ambient Design
- Automatic Reset Thermal Overload Protector
- Designed for Use with 370V Capacitors
- Special Treated Rotor For Corrosion Protection
- Totally Enclosed, Air Over (TEAO)
- Continuous Duty, Air Over
- Extended Mounting Studs
- Reversible Rotation
- 36" Leads
- Ball Bearings



All Models



42 Frame



Stock #	Encl.	HP Range	Volts	Amps.	RPM	"C" Dim.	Shaft	Rotation
<b>NEW</b> EM-5440H ●*	T.E.	1/8 - 1/12	208-230	0.80	1075	8.00"	1/2" x 3.00"	REV.
<b>NEW</b> EM-5441H ●*	T.E.	1/4 - 1/6	208-230	1.50	1075	8.50"	1/2" x 3.00"	REV.

## Cross Reference

	Rotom *	Genteq *	A.O. Smith *	Fasco *
EM-5440H	M4-R2722	2S005, 2251	9722	G2243, G2248, G2249
EM-5441H	M4-R2723	2S003, 2250	9723	G2247, G2246, G2244, G2245

(\*) These motors are rated 60°C Ambient



**EZ-FIT® Motor Mounting Bracket**

Assembled out of the box to use as a clam shell replacement. Easily adapts to a 4.4" or 4.6" bolt circle for other applications



**Clam Shell**

4.3" Bolt Circle



**3 Pc**

4.4" Bolt Circle

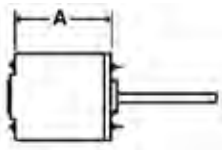


**3 Pc**

4.6" Bolt Circle

**Features:**

- Single Phase P.S.C.
- Totally Enclosed, Air Over
- Reversible Rotation
- 60°C & 70°C Ambient Rating
- Ball Bearings



48 Frame



All US Motors Models



All OmniDrive Models



All Century Models

**OMNIDRIVE®**



Formerly Emerson Motors



Formerly A.O. Smith Electrical Products Company

Stock #	Encl.	HP	Volts	Amps.	RPM	"A" Dim.	Shaft	Rotation	Replaces
SS3727 •	T.E.A.O	1/6	208-230	1.10	1075	3.86"	1/2" x 6.00"	REV.	CF-3726
SS3728 •	T.E.A.O	1/4	208-230	2.00	1075	4.11"	1/2" x 6.00"	REV.	CF-3732
SS3729 •	T.E.A.O	1/3	208-230	2.50	1075	4.61"	1/2" x 6.00"	REV.	CF-3733
SS3730 •	T.E.A.O	1/2	208-230	3.40	1075	5.11"	1/2" x 6.00"	REV.	CF-3734
SS3731 •	T.E.A.O	3/4	208-230	5.30	1075	5.36"	1/2" x 6.00"	REV.	CF-3735
SS739B •	T.E.A.O	1/4	208-230	1.70	825	4.25"	1/2" x 6.50"	REV.	CF-814
SS740B •	T.E.A.O	1/3	208-230	1.90	825	5.00"	1/2" x 6.50"	REV.	CF-813
EM-1872H •*	T.E.A.O	1/8	208-230	0.78	825	4.30"	1/2" x 6.00"	REV.	3202HS
EM-1873H •*	T.E.A.O	1/6	208-230	1.20	825	4.30"	1/2" x 6.00"	REV.	3203HS
EM-1874H •*	T.E.A.O	1/4	208-230	2.10	825	4.40"	1/2" x 6.00"	REV.	3204HS
EM-1875H •*	T.E.A.O	1/3	208-230	2.40	825	5.30"	1/2" x 6.00"	REV.	3205HS
EM-1870H •*	T.E.A.O	1/2	208-230	3.30	825	6.10"	1/2" x 6.00"	REV.	3747HS
EM-1880 •	T.E.A.O	1/4	460	1.00	825	5.10"	1/2" x 6.00"	REV.	---
EM-1881 •	T.E.A.O	1/3	460	1.00	825	5.60"	1/2" x 6.00"	REV.	3209
EM-3736H •*	T.E.A.O	1/4	460	1.00	1075	4.80"	1/2" x 6.00"	REV.	3736HS
EM-3737H •*	T.E.A.O	1/3	460	1.30	1075	5.60"	1/2" x 6.00"	REV.	3737HS
EM-3738H •*	T.E.A.O	1/2	460	1.50	1075	5.80"	1/2" x 6.00"	REV.	3738HS
EM-3742H •*	T.E.A.O	3/4	460	2.20	1075	6.60"	1/2" x 6.00"	REV.	3739HS
5FE1036S •	T.E.A.O	1/3	575	0.80	1100	5.36"	1/2" x 6.50"	REV.	R42604
5FE1056S •	T.E.A.O	1/2	575	1.20	1100	5.61"	1/2" x 6.50"	REV.	R42606
5FE1054S •	T.E.A.O	1/2	575	1.40	1625	5.36"	1/2" x 6.50"	REV.	R42605
5FE1076S •	T.E.A.O	3/4	575	1.90	1075	6.11"	1/2" x 6.50"	REV.	R42607

(\* ) These Motors are Rated 70°C Ambient





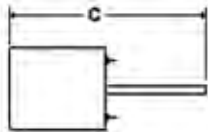
# Ultimate Truck Stock Motor™

**Features:**

- High Efficiency P.S.C. Design
- High 70°C (158°F) Ambient Design
- Automatic Reset Thermal Overload Protector
- Designed for Use With 370V Capacitors
- Special Treated Rotor For Corrosion Protection
- Includes Lead End Mounting Holes For Rheem or Trane Units
- Class 'F' Insulation
- Extended Mounting Studs
- Flat Lead End for Shaft Down Applications
- Reversible Rotation
- Continuous Duty, Air Over
- 48" Leads with Flag Terminals
- Ball Bearings



All Models



48 Frame - Two Speed



Stock #	HP Range	Volts	Amps.	RPM	"C" Dim.	Shaft	Rotation
EM-5464H ●*	1/3 - 1/6	208-230	1.90 - 1.00	825/2	10.30"	1/2" x 5.00"	REV.
EM-5462H ●*	1/3 - 1/6	208-230	2.60 - 1.80	1075/2	9.60"	1/2" x 5.00"	REV.
EM-5465H ●*	1/2 - 1/5	208-230	3.00 - 1.30	1075/2	10.30"	1/2" x 5.00"	REV.
EM-5482H ●*	3/4 - 1/4	208-230	4.00 - 1.40	1075/2	11.87"	1/2" x 5.00"	REV.
EM-5480H ●*	1/2 - 1/6	460	1.30 - 0.50	1075/2	11.10"	1/2" x 5.00"	REV.
EM-5481H ●*	3/4 - 1/4	460	2.20 - 0.70	1075/2	11.85"	1/2" x 5.00"	REV.

**Cross Reference**

	Rotom	Genteq	A.O. Smith
EM-5464H	M2-R22601	3457HS, 3459HS	FE6001F
EM-5462H	M2-R22600	3456HS, 3458HS	FE6000F
EM-5465H	M2-R22602	3460HS	FE6002F
EM-5482H	M2-R22604	N/A	FE6003F
EM-5480H	N/A	N/A	N/A
EM-5481H	N/A	N/A	N/A



**Features:**

- Open Opposite Shaft-End & Totally Enclosed
- Single Phase P.S.C. & Three Phase
- Round Body & Rigid Base
- Reversible Rotation
- Auto Protection
- Ball Bearings



**56 Frame - Single Phase**

Stock #	Encl.	HP	Volts	Amps.	RPM	Shaft	Rotation	Replaces
C770 ●*	O.O.S.E.	1	200-230 / 460-1Ø	4.80 / 2.40	1075	5/8" x 6.00"	REV.	S1514
C081 ●*	O.O.S.E.	1	575-1Ø	2.20	1075	5/8" x 6.00"	REV.	S1516
C771 ●*	O.O.S.E.	1.5	200-230 / 460-1Ø	6.60 / 3.30	1075	5/8" x 6.00"	REV.	S1518
181574 ●*	O.O.S.E.	1.5	575-1Ø	2.70	1075	5/8" x 6.00"	REV.	S1520



**56 Frame - Three Phase**

Stock #	Encl.	HP	Volts	Amps.	RPM	Shaft	Rotation	Replaces
H564 ●	O.O.S.E.	1/2	200-230 / 460-3Ø	2.8-2.6 / 1.30	1140	5/8" x 6.00"	REV.	T2532
H977 ●	T.E.	1/2	575-3Ø	0.80	1140	5/8" x 3-3/8"	REV.	AICH977
H567 ●	O.O.S.E.	3/4	200-230 / 460-3Ø	2.8-3.0 / 1.50	1140	5/8" x 6.00"	REV.	T2534
H961 ●	O.O.S.E.	3/4	575-3Ø	1.25	1140	5/8" x 6.00"	REV.	T2535
H667 ●	O.O.S.E.	1	200-230 / 460-3Ø	5.3-5.2 / 2.60	1140	5/8" x 6.00"	REV.	T2538
H671 ●	O.O.S.E.	1	575-3Ø	2.00	1140	5/8" x 6.00"	REV.	T2540
UEH686 ●	O.O.S.E.	1	200-230 / 460-3Ø	5.0 / 2.5	850	5/8" x 6.00"	REV.	T2537
H686 ●	O.O.S.E.	1	200-230 / 460-3Ø	4.4-4.0 / 2.00	850	5/8" x 5.00"	REV.	T2537
UEH962 ●	O.O.S.E.	1	575-3Ø	2.10	850	5/8" x 6.00"	REV.	T2539
H962 ●	O.O.S.E.	1	575-3Ø	1.60	850	5/8" x 3-1/4"	REV.	T2539
H767 ●	O.O.S.E.	1.5	200-230 / 460-3Ø	5.8-6.0 / 3.00	1140	5/8" x 6.00"	REV.	T2542
H963 ●	O.O.S.E.	1.5	575-3Ø	2.30	1140	5/8" x 6.00"	REV.	T2543
UEH699 ●	O.O.S.E.	2	200-230 / 460-3Ø	7.8 / 3.90	1140	5/8" x 6.00"	REV.	T2544
H978 ●	O.O.S.E.	SPL	200-230 / 460/575-3Ø	5.5 / 3.4 / 2.80	1140	5/8" x 3-1/2"	REV.	HD52AK652
RMT0062 ●	O.O.S.E.	1.5	575-3Ø	2.50	860	5/8" x 2-1/2"	REV.	RMT0062
MA1074 ●	T.E.	2	575-3Ø	3.10	1140	5/8" x 3.00"	REV.	MA1074
173224 ●	O.O.S.E.	2	575-3Ø	2.60	1140	5/8" x 3-1/4"	REV.	T2536
181651 ●	T.E.	2	575-3Ø	2.70	1140	5/8" x 2-1/2"	REV.	---

(●) Ball Bearing (\*) P.S.C. Design

### Features:

- Open Opposite Shaft-End
- Inverter Duty
- Class 'F' Insulation
- Automatic Overload
- Energy Efficient
- Reversible Rotation
- Ball Bearings
- Aegis Shaft Grounding Ring Included (note 'G')



Century (Rigid or Removable Base)

New Product



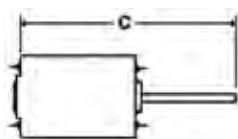
US Motors (Belly Band Mounting)



Shaft Grounding Ring



US Motors (Rigid Base Mounting)



### 56 Frame - Three Phase



Stock #	Encl.	HP	Volts	Amps.	RPM	"C" Dim.	Shaft	Rotation
New H1055A ●	O.O.S.E.	1/2	208-230/460	2.8-2.6 / 1.3	1140	16.09"	5/8" x 6.00"	REV.
New H1056A ●	O.O.S.E.	3/4	208-230/460	2.8-3.0 / 1.5	1140	16.20"	5/8" x 6.00"	REV.
H1050A ●	O.O.S.E.	1	208-230/460	4.0-4.4 / 2.2	1140	16.30"	5/8" x 6.00"	REV.
H1051A ●	O.O.S.E.	1-1/2	208-230/460	5.8-5.8 / 2.9	1140	17.32"	5/8" x 6.00"	REV.
H1052A ●	O.O.S.E.	2	208-230/460	7.0-7.4 / 3.7	1140	18.32"	5/8" x 6.00"	REV.
H1053A ●	O.O.S.E.	1	208-230/460	5.0-5.2 / 2.6	850	18.32"	5/8" x 6.00"	REV.
H1054A ●	O.O.S.E.	1-1/2	208-230/460	5.0-5.2 / 2.6	850	18.77"	5/8" x 6.00"	REV.
New H1050RB ●+	O.O.S.E.	1	208-230/460	4.4-4.0 / 2.2	1140	16.30"	5/8" x 6.00"	REV.
New H1051RB ●+	O.O.S.E.	1-1/2	208-230/460	5.8-5.8 / 2.9	1140	17.32"	5/8" x 6.00"	REV.
New H1052RB ●+	O.O.S.E.	2	208-230/460	7.4-7.0 / 3.7	1140	18.32"	5/8" x 6.00"	REV.
New H1053RB ●+	O.O.S.E.	1	208-230/460	5.2-5.0 / 2.6	850	18.32"	5/8" x 6.00"	REV.
New H1054RB ●+	O.O.S.E.	1-1/2	208-230/460	6.7-7.2 / 3.6	850	18.77"	5/8" x 6.00"	REV.
New EM-1818VG ●>	O.O.S.E.	1	208-230/460	4.3-4.3 / 2.1	1140	15.80"	5/8" x 6.00"	REV.
New EM-1819VG ●>	O.O.S.E.	1-1/2	208-230/460	5.4-5.7 / 2.6	1140	16.30"	5/8" x 6.00"	REV.
New EM-8987VG ●>	O.O.S.E.	2	208-230/460	7.8-7.8 / 3.9	1140	17.30"	5/8" x 6.00"	REV.
New EM-1830VG ●>	O.O.S.E.	1	208-230/460	5.3-5.3 / 2.6	850	15.80"	5/8" x 3.25"	REV.
New EM-1828VG ●>	O.O.S.E.	1	208-230/460	5.3-5.3 / 2.6	850	16.80"	5/8" x 6.00"	REV.
New EM-1832VG ●>	O.O.S.E.	1-1/2	208-230/460	7.2-7.2 / 3.6	850	15.80"	5/8" x 3.50"	REV.
New EM-1820VG ●+	O.O.S.E.	1	208-230/460	4.3-4.3 / 2.1	1140	15.80"	5/8" x 6.00"	REV.
New EM-1821VG ●+	O.O.S.E.	1-1/2	208-230/460	5.3-5.3 / 2.6	1140	16.30"	5/8" x 6.00"	REV.
New EM-1822VG ●+	O.O.S.E.	2	208-230/460	7.8-7.8 / 3.9	1140	17.30"	5/8" x 6.00"	REV.
New EM-1833VG ●+	O.O.S.E.	1	208-230/460	5.3-5.3 / 2.6	850	16.80"	5/8" x 6.00"	REV.
New EM-1831VG ●+	O.O.S.E.	1-1/2	208-230/460	7.2-7.2 / 3.6	850	15.80"	5/8" x 3.50"	REV.
New EM-1139VG ●+	O.O.S.E.	1/2	208-230/460	3.2-3.1 / 1.6	575	14.40"	5/8" x 2.25"	REV.

(G) Shaft Grounding Rings Installed (>) Belly Band Mount (+) Rigid Base Mount





### Blanchard-Ness

Stock #	Encl.	HP	Volts	Amps.	RPM	Shaft	Rotation	Replaces
SS605	SKEL	---	120	1.00	2800	3/16" x 1-3/4"	CCWSE	AIC605
572A	OPEN	1/20	115	1.90	1550	5/16" x 3.00"	CWSE	D1124
573A	OPEN	1/15	208-230	1.30	1550	5/16" x 3.00"	CWSE	D1126
SS358	OPEN	1/20	115	2.00	1550	5/16" x 3.00"	CWSE	AIC1052
SS359	OPEN	1/20	208-230	1.10	1430	5/16" x 3.00"	CWSE	AIC1053
SS302	OPEN	1/100	240	0.30	1400	1/4" x 1.50"	CCWSE	E1004
SS326	OPEN	1/85	115	0.50	1550	1/4" x 1.45"	CCWSE	79101, E1001 E1002, E1003
<span style="color: green;">★</span> EM-9662 ●*	OPEN	1/20	115	0.85	1550	5/16" x 3.00"	REV.	MA1009
<span style="color: green;">★</span> EM-9656 ●*	OPEN	1/15	208-230	0.48	1550	5/16" x 3.00"	REV.	MA1010
<span style="color: green;">★</span> SS739B ●*	T.E.	1/4	208-230	1.70	825	1/2" x 6-1/2"	REV.	E1026
<span style="color: green;">★</span> SS3729 ●*	T.E.	1/3	208-230	2.50	1075	1/2" x 6.00"	REV.	E1022, E1025
<span style="color: green;">★</span> SS3730 ●*	T.E.	1/2	208-230	3.40	1075	1/2" x 6.00"	REV.	E1064
H564 ●	O.O.S.E.	1/2	200-230/460	2.8-2.6 / 1.30	1140	5/8" x 6.00"	REV.	E1020, E1066
H977 ●	T.E.	1/2	575-3Ø	0.80	1140	5/8" x 3-3/8"	REV.	AICH977
H686	O.O.S.E.	1	200-230/460-3Ø	4.4-4.0 / 2.00	850	5/8" x 5.00"	REV.	T2537
<span style="color: green;">★</span> UEH686 ●	O.O.S.E.	1	208-230/460-3Ø	5.0 / 2.50	850	5/8" x 5.00"	REV.	X507
H962 ●	O.O.S.E.	1	575-3Ø	1.60	850	5/8" x 3-1/4"	REV.	X527
<span style="color: green;">★</span> UEH962 ●	O.O.S.E.	1	575-3Ø	2.10	850	5/8" x 6.00"	REV.	X527
<span style="color: green;">★</span> UEH699 ●	O.O.S.E.	2	208-230/460-3Ø	7.8 / 3.90	1140	5/8" x 6.00"	REV.	X509
173224 ●	O.O.S.E.	2	575-3Ø	2.60	1140	5/8" x 3-1/4"	REV.	X526



EM-9662 - EM-9656

H977 - 181651 - H698

MA1074

### Cancoil Thermal

Stock #	Encl.	HP	Volts	Amps.	RPM	Shaft	Rotation	Replaces
<span style="color: green;">★</span> EM-9662 ●*	OPEN	1/20	115	0.85	1550	5/16" x 3.00"	REV.	MA1009
<span style="color: green;">★</span> EM-9656 ●*	OPEN	1/15	208-230	0.48	1550	5/16" x 3.00"	REV.	MA1010
H977 ●	T.E.	1/2	575-3Ø	0.80	1140	5/8" x 3-3/8"	REV.	AICH977
181651 ●	T.E.	2	575-3Ø	2.70	1140	5/8" x 2-1/2"	REV.	MA1003
MA1074 ●	T.E.	2	575-3Ø	3.10	1140	5/8" x 3.00"	REV.	CAN2575
H698 ●	T.E.	2	208-230/460	6.8-6.2 / 3.10	1140	5/8" x 6.00"	REV.	MA1075



**Carrier**

Stock #	Encl.	HP	Volts	Amps.	RPM	Shaft	Rotation	Replaces
5OCA1056 ●*	SEMI-ENCL	1/2	575	1.80	1075	1/2" x 1-9/16"	CCWLE	CCFM12575, HC43VE575
OCA1056 ●*	SEMI-ENCL	1/2	575	4.60 / 2.30	1075	1/2" x 1-9/16"	CCWLE	3288, HC43VE200B
5OCA3056 ●	SEMI-ENCL	1/2	575-3Ø	1.00	1140	1/2" x 2-1/2"	REV.	HD44ML461, P48J6A2
5BD1106 ●*	OPEN	1	575	2.40	1075/2	1/2" x 5.00"	REV.	F1575DD, 50HJ900575
H953V1 ●	OPEN	2	575-3Ø	2.40	1800	7/8" x 2.30"	REV.	F21853, HD52GA875
UEH953 ●	OPEN	2	575-3Ø	2.70	1725	7/8" x 2-1/4"	REV.	F21853, HD52GA875
H955L ●	OPEN	3	575-3Ø	3.60	1800	7/8" x 2.30"	REV.	F31853, HD58DL575
UEH955 ●	OPEN	3	575-3Ø	3.40	1800	7/8" x 2.30"	REV.	F31853, HD58DL575
181574 ●	O.O.S.E.	1.5	575	2.70	1075	5/8" x 6.00"	REV.	CCFM1575, HC51TE575
H978 ●	O.O.S.E.	SPL	208-230/460/575-3Ø	5.5/3.4/2.8	1140	5/8" x 3-5/8"	REV.	HD52AK652
H979L ●	OPEN	5	208-230/460-3Ø	15.00 / 7.40	1725	7/8" x 2-5/16"	REV.	HD60FK652
H980L ●	OPEN	3	208-230/460-3Ø	10.60 / 4.80	1725	7/8" x 2-5/16"	REV.	HD60FK651
HD60FE575 ●	OPEN	5	575-3Ø	5.60	1725	7/8" x 3-1/4"	REV.	HD60FE575

**Copeland**



Stock #	Encl.	HP	Volts	Amps.	RPM	Shaft	Rotation	Replaces
254	OPEN	35W	115	1.40	1500	Hubless	CWLE	R3511, 050-0227-01
256	O.O.S.E.	35W	230	0.70	1500	Hubless	CWLE	R3512, 050-0227-02
260	OPEN	50W	230	0.85	1500	3/8" x 1-1/2"	CWLE	R5012, 050-0017-01
174A *	OPEN	1/6	208-230	1.00	1625	1/2" x 2-1/2"	REV.	R3051
OCP0251 *	OPEN	1/6	230	1.50	1625	1/2" x 2-1/2"	CWLE	050-0251-00
OCP0250 *	OPEN	1/4	230	1.50	1625	1/2" x 2-1/2"	CWLE	050-0250-00
OCP1024 ●*	OPEN	1/4	208-230	1.50	1625	1/2" x 3.00"	CWLE	R3047, 050-0107-01

**Hill**



Stock #	Encl.	HP	Volts	Amps.	RPM	Shaft	Rotation	Replaces
160A *	OPEN	1/3	208-230	3.00	1625	1/2" x 4.00"	REV.	R3001, PP3955B
OHR1106 ●*	OPEN	1	208-230	7.10 / 6.40	1075	1/2" x 3-3/4"	REV.	R3067, PP19162G

New Product



**Heatcraft (Bohn/Larkin)**

Stock #	Encl.	HP	Volts	Amps.	RPM	Shaft	Rotation	Replaces
SS605	SKEL	---	120	1.00	2800	3/16" x 1-3/4"	CCWSE	AIC605
572A	OPEN	1/20	115	1.90	1550	5/16" x 3.00"	CWSE	D1124
EM-9662 ●*	OPEN	1/20	115	0.85	1550	5/16" x 3.00"	REV.	5001L, 5008S, 5004L, 5034L, 5034LS, 5008SS
573A	OPEN	1/15	208-230	1.30	1550	5/16" x 3.00"	CWSE	D1126
EM-9656 ●*	OPEN	1/15	208-230	0.48	1550	5/16" x 3.00"	REV.	7190-0442, 25309101, 5008T, 5034M, 5034MS
SS9721 ●*	OPEN	1/12	115/208-230	1.10 / 0.60	1550	5/16" x 3.15"	REV.	R90721, 253-9101
SS3729 ●	T.E.	1/3	208-230	2.50	1075	1/2" x 6.00"	REV.	CF-3733
SS3730 ●	T.E.	1/2	208-230	3.40	1075	1/2" x 6.00"	REV.	CF-3734



**Hussmann**

Stock #	Encl.	HP	Volts	Amps.	RPM	Shaft	Rotation	Replaces
OHS1004 *	OPEN	1/8	230	1.00	1550	1/2" x 2.00"	CWLE	3011
174A *	OPEN	1/6	208-230	1.00	1625	1/2" x 2-1/2"	REV.	3057
OHS1016 *	OPEN	1/5	230	1.60	1075	1/2" x 3.00"	CWLE	3009
OHS10206 ●*	OPEN	1/5	208-230	1.30	1075	1/2" x 3.00"	CWLE	3008/3012
OHS9983 ●*	OPEN	1/2	208-230	2.70	1725	1/2" x 3-1/2"	CWLE	R3051, 259983
F062 ●	OPEN	1/20	600	0.42	1550	1/2" x 2-1/2"	CWSE	206578, HHC FM, DA2F062, DA2F091
SS34201 ●*	OPEN	1/5	575	0.50	1075	1/2" x 3.30"	CCWSE	204201, R34201
J055 ●*	T.E.	1/6	575	0.80	1650	1/2" x 3.20"	REV.	77238, 1042140, R30575
H667 ●	O.O.S.E.	1	200-230/460-3Ø	5.3-5.2/2.6	1140	5/8" x 6.00"	REV.	T2540
H671 ●	O.O.S.E.	1	575-3Ø	2.00	1140	5/8" x 6.00"	REV.	T2538

(●) Ball Bearing (\*) P.S.C. Design



New Product



**Keeprite**

Stock #	Encl.	HP	Volts	Amps.	RPM	Shaft	Rotation	Replaces
SS370 ●*	OPEN	1/20	115	0.80	1550	5/16" x 2.80"	CCWSE	R370
SS371 ●*	OPEN	1/20	230	0.30	1550	5/16" x 2.80"	CCWSE	R371
SS2269	OPEN	1/15	115	2.70	1050	1/2" x 2.75"	CWSE	160269, R2269
SS2657	OPEN	1/15	230	1.20	1550	3/8" x 2.44"	CCWSE	81335, R2657
SS2658	OPEN	1/15	115	2.30	1550	3/8" x 2.44"	CCWSE	81356, R2658
FE1026 ●*	T.E.A.O.	1/4	208-230	1.80	1075/2	1/2" x 6.00"	REV.	AICF171672
G004 ●	T.E.	1/4	575-3Ø	0.46	1100	5/8" x 2.93"	REV.	171065, R31065
5BD1076 ●*	OPEN	3/4	575-1Ø	2.30	1075/2	1/2" x 5.00"	REV.	F34575DD, HQ1095096
176826 ●	OPEN	1.25	208-230-3Ø	4.70-5.00	1140	5/8" x 3-1/4"	REV.	1043297-001, T1826
173946 ●	OPEN	1.25	575-3Ø	2.00	1140	5/8" x 3-1/4"	REV.	1043299-01, T1946
187289 ●	OPEN	1 SPL	575-3Ø	2.30	850	5/8" x 3-1/4"	REV.	1062968-001



**Krack**

Stock #	Encl.	HP	Volts	Amps.	RPM	Shaft	Rotation	Replaces
9627	T.E.	1/25	115	1.30	1550	5/16" x 1-3/4"	CCWLE	11528, JAZP216
9628	T.E.	1/20	200-230	0.90	1550	5/16" x 1-1/2"	CCWLE	11529, JA2P217, JA2S149
New EM-9662 ●*	OPEN	1/20	115	0.85	1550	5/16" x 3.00"	REV.	9633, E206447
New EM-9656 ●*	OPEN	1/15	208-230	0.48	1550	5/16" x 3.00"	REV.	9634, E206448
OKR1096 ●	T.E.A.O.	1/2	208-230/460-3Ø	2.0-1.9/0.95	1140	5/8" x 2.00"	REV.	150372, 11096
OKR1503 ●	T.E.A.O.	1	200-230/460-3Ø	4.4-4.0/2.00	840	5/8" x 3-1/4"	REV.	151437, 11503



**Lennox**

LX7930 - 5BD1106

H671

H953V1

UEH953

Stock #	Encl.	HP	Volts	Amps.	RPM	Shaft	Rotation	Replaces
EM-1268 *	OPEN	1/5	115	3.50	1075/4	1/2" x 3.50"	REV.	P-8-9662
SS1314 *	OPEN	1/3	115	6.00	1075/4	1/2" x 5-1/8"	CCWLE	DD-1314, F1314D
9405A •*	OPEN	3/4	115	9.70	1075/5	1/2" x 3-1/8"	CCWLE	45H3301, 28F01
9406A •*	OPEN	3/4	208-230	6.60	1075/3	6-1/2" x 5/8" x 5-1/4"	CCWLE	31C8201
New LX7930 *	OPEN	3/4	460	2.30	1075/3	1/2" x 2.50"	CWSE	43G5201
5BD1106 •*	OPEN	1	575	2.40	1075/2	1/2" x 5.00"	REV.	F34575DD, 88C7601
H671 •	O.O.S.E.	1	575-3Ø	2.00	1140	5/8" x 6.00"	REV.	98G6501
H953V1 •	OPEN	2	575-3Ø	2.40	1800	7/8" x 2.30"	REV.	32657/F21853
New UEH953 •	OPEN	2	575-3Ø	2.70	1725	7/8" x 2-1/4"	REV.	32657/F21853



**Ref Plus**

EM-9662 - EM-9656

SS368 - SS369

RMT0004 - RMT0005

RMT0062

MA1074

Stock #	Encl.	HP	Volts	Amps.	RPM	Shaft	Rotation	Replaces
New EM-9662 •*	OPEN	1/20	115	0.85	1550	5/16" x 3.00"	REV.	MA1009
New EM-9656 •*	OPEN	1/15	208-230	0.48	1550	5/16" x 3.00"	REV.	MA1010
SS368	OPEN	1/20	115	1.80	1550	5/16" x 2-3/4"	CCWSE	RMT-0011
SS369	OPEN	1/20	208-230	0.90	1550	5/16" x 2-3/4"	CCWSE	RMT-0012
RMT0004 •	T.E.	34W	115	1.60	1550	Hubless	CCWSE	NU-34-45-2/1543
RMT0005 •	T.E.	34W	230	0.80	1550	Hubless	CCWSE	NU-34-45-4/1542
RMT0062 •	O.O.S.E.	1.5	575-3Ø	2.50	860	5/8" x 2-1/2"	REV.	43846, 43424
MA1074 •	T.E.	2	575-3Ø	3.10	1140	5/8" x 3.00"	REV.	RMT-0064

New Product



**Tecumseh**

Stock #	Encl.	HP	Volts	Amps.	RPM	Shaft	Rotation	Replaces
276	OPEN	50W	230	0.85	1500	5/16" x 2-1/2"	CCWLE	810M050A62, TFM502
981	OPEN	1/15	460	0.60	1550	5/16" x 2-1/2"	CCWLE	810G037A47, 810G050A49
OTC6001	OPEN	1/15	230	1.30	1550	5/16" x 2-3/4"	CCWLE	810S050A99
EM-1779P *	OPEN	1/15	230	0.62	1625	5/16" x 3.00"	CCWSE	TFM502, 810E050A85, F48HXDEJ1779
9487	OPEN	1/12	230	1.30	1500	5/16" x 2-1/8"	CWLE	TFM262
OTC6004	OPEN	1/20	230	1.10	1550	5/16" x 2-1/2"	CCWLE	810S037B01, R2372
EM-1775P *	OPEN	1/20	230	0.50	1500	5/16" x 3.00"	CCWSE	F48DEF1775, TFM372, 810E037A84
OTC1862 ●*	OPEN	1/4	230	1.90	1625	1/2" x 2-3/4"	CWLE	TFM1862
OTC1864 ●*	OPEN	1/4	460	0.95	1625	1/2" x 2-3/4"	CWLE	TFM1864



954 - 9608

955

UE955

680A



5FE1056S - 5FE1054S - 5FE1076S



5BD1076 - 5BD1106



H955L



UEH955

**Trane**

Stock #	Encl.	HP	Volts	Amps.	RPM	Shaft	Rotation	Replaces
954 *	OPEN	1/30	115	0.60	1100/3	1/2" x 8-1/2"	CWLE	MOT-1878, MOT-1875
9608 *	OPEN	1/20	115	0.60	1100/3	1/2" x 9-7/8"	REV.	MOT-1875, X70500149-02
955 *	OPEN	1/6	115	2.00	1500/3	10-1/2" x 1/2" x 10-1/2"	CWLE	MOT-1979, MOT-482
UE955 *	OPEN	1/6	115	2.30	1500/3	10-1/2" x 1/2" x 10-1/2"	DBL	MOT-1979, MOT-482
680A *	OPEN	1/8	115	1.50	775/3	11-1/2" x 1/2" x 11-1/2"	CCWLE	MOT-711
5FE1056S ●*	T.E.A.O.	1/2	575	1.20	1100	1/2" x 6-1/2"	REV.	D2752
5FE1054S ●*	T.E.A.O.	1/2	575	1.40	1625	1/2" x 6-1/2"	REV.	D2750
5FE1076S ●*	T.E.A.O.	3/4	575	1.90	1075	1/2" x 6-1/2"	REV.	D2753, MOT-2607
5BD1076 ●*	OPEN	3/4	575	2.30	1075/2	1/2" x 5.00"	REV.	F34575DD, 21A309661P01
5BD1106 ●*	OPEN	1	575	2.40	1075/2	1/2" x 5.00"	REV.	F1575DD, X70671181-017, X70671479-001
H955L ●	OPEN	3	575-3Ø	3.60	1800	7/8" x 2.30"	REV.	F31853, MOT-6769, MOT-9800
UEH955 ●	OPEN	3	575-3Ø	3.40	1800	7/8" x 2.30"	REV.	F31853, MOT-6769, MOT-9800



New Product



EM-3738H



OYK1056V1



5BD1076 - EM-2553



H953V1



UEH953 - UEH955



H955L

**York**

Stock #	Encl.	HP	Volts	Amps.	RPM	Shaft	Rotation	Replaces
EM-3738H ●*	T.E.A.O.	1/2	460	1.50	1075	1/2" x 6.00"	REV.	YCM124SD, 024-24100-002
OYK1056V1 *	T.E.A.O.	1/2	208-230	2.50	1090	1/2" x 4.00"	CWLE	024-24110-701, 713
5BD1076 ●*	OPEN	3/4	575	2.30	1075/2	1/2" x 5.00"	REV.	F34575DD, 024-31946-003
EM-2553 *	OPEN	1	460	3.30	1100/3	1/2" x 4.00"	REV.	YEFM1460, 024-21671-000 024-21673-000
H953V1 ●	OPEN	2	575-3Ø	2.40	1800	7/8" x 2.30"	REV.	F21853, 024-19623-007
UEH953 ●	OPEN	2	575-3Ø	2.70	1725	7/8" x 2-1/4"	REV.	F21853, 024-19623-007
H955L ●	OPEN	3	575-3Ø	3.60	1800	7/8" x 2.30"	REV.	F31853, 024-19623-009
UEH955 ●	OPEN	3	575-3Ø	3.40	1800	7/8" x 2.30"	REV.	F31853, 024-19623-009

Pedestal Fan Air Circulator Motors

**Features:**

- Yoke Mount - Extended Through Bolts
- Totally Enclosed, Air Over
- Thermally Protected
- Pull Chain
- 10' Cord & Plug
- 40°C Ambient
- Sealed Ball Bearings



All Models

48 Frame - Two Speed

	Stock #	Encl.	HP	Volts	Amps.	RPM	Shaft	Rotation	Replaces
	SS486 ●*	T.E.A.O.	1/4	115	3.40	1100 / 2	1/2" x 3.00"	REV.	General Replacement
	SS647 ●*	T.E.A.O.	1/3	115	4.40	1100 / 2	1/2" x 3.00"	REV.	General Replacement

(●) Ball Bearing (\*) P.S.C. Design



### Features:

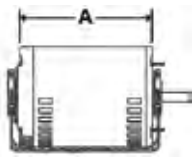
- Open Drip-Proof
- Class 'B' Insulation
- Reversible Rotation
- 60 Hz.
- Resilient Base
- Thermally Protected
- 1/2" to 5/8" Sleeve & Key Included
- Self-Aligning Sleeve & Sealed Ball Bearings



All Omnidrive Models



All Century Models



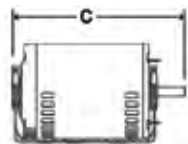
48 Frame - Single Speed

OMNIDRIVE®

Century®  
Formerly A.O. Smith Electrical Products Company

Stock #	Encl.	HP	Volts	Amps.	RPM	"A" Dim.	Shaft	Rotation
SS933	OPEN	1/4	115	4.80	1725	6.81"	1/2" x 1.50"	REV.
SS934	OPEN	1/3	115	6.60	1725	6.81"	1/2" x 1.50"	REV.
SS935	OPEN	1/2	115	8.30	1725	7.76"	1/2" x 1.50"	REV.
SS934B ●	OPEN	1/3	115	6.60	1725	6.81"	1/2" x 1.50"	REV.
SS935B ●	OPEN	1/2	115	7.60	1725	6.81"	1/2" x 1.50"	REV.
<b>NEW</b> SS933D ●	OPEN	1/4	115/208-230	4.60/2.20-2.10	1725	6.75"	1/2" x 1.88"	REV.
<b>NEW</b> SS934D ●	OPEN	1/3	115/208-230	6.60/3.40-3.10	1725	6.75"	1/2" x 1.88"	REV.
<b>NEW</b> SS935D ●	OPEN	1/2	115/208-230	7.60/3.70-3.80	1725	8.58"	1/2" x 1.88"	REV.
<b>NEW</b> SS936D ●^	OPEN	3/4	115/208-230	11.60/5.90-5.80	1725	10.55"	5/8" x 1.88"	REV.
GF2024	OPEN	1/4	115	5.40	1725	7.50"	1/2" x 1.50"	REV.
GF2034	OPEN	1/3	115	6.80	1725	7.80"	1/2" x 1.50"	REV.
GF2054	OPEN	1/2	115	8.00	1725	8.30"	1/2" x 1.50"	REV.
RB2024 ●	OPEN	1/4	115	5.00	1725	7.80"	1/2" x 1.50"	REV.
RB2034 ●	OPEN	1/3	115	6.00	1725	7.50"	1/2" x 1.50"	REV.
BF2054 ●	OPEN	1/2	115/208-230	8.20/4.10	1725	8.30"	1/2" x 1.50"	REV.

(^) 56 Frame



56Z Frame - Two Speed



All US Motors Models

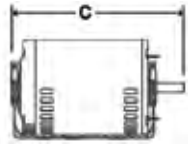


Formerly Emerson Motors

Stock #	Encl.	HP	Volts	Amps.	RPM	"C" Dim.	Shaft	Rotation
EM-5793C ●	OPEN	1/3	115	6.40	1725/1140	10.40"	1/2" x 1.50"	REV.
EM-5794C ●	OPEN	1/2	115	8.70	1725/1140	10.40"	1/2" x 1.50"	REV.
EM-5795C ●	OPEN	3/4	115	11.50	1725/1140	11.30"	1/2" x 1.50"	REV.

**Features:**

- Open Drip-Proof
- Class 'A' and 'B' Insulation
- Reversible Rotation
- Resilient Base
- 5/8" Diameter Shaft
- 40°C Ambient
- High Starting Torque
- Sleeve and Ball Bearings



56 Frame



All Century Models



All US Motors Models



Formerly A.O. Smith Electrical Products Company



Formerly Emerson Motors

Stock #	Encl.	HP	Volts	Amps.	RPM	"C" Dim.	Rotation
C455	O.D.P.	1/3	115 / 208-230	6.60 / 3.00 - 3.30	1725	11.10"	REV.
C403 ●	O.D.P.	1/3	115 / 208-230	6.60 / 3.00 - 3.30	1725	11.10"	REV.
C607	O.D.P.	1/2	115 / 208-230	9.00 / 4.00 - 4.50	1725	11.10"	REV.
C412V1 ●	O.D.P.	1/2	115 / 208-230	9.00 / 4.00 - 4.50	1725	11.10"	REV.
C654	O.D.P.	3/4	115 / 208-230	5.40 - 5.50 / 11.00	1725	11.10"	REV.
C426V1 ●	O.D.P.	3/4	115 / 208-230	5.40 - 5.50 / 11.00	1725	11.10"	REV.
C692	O.D.P.	1	115 / 208-230	6.20 - 6.30 / 12.60	1725	11.40"	REV.
C523V1 ●	O.D.P.	1	115 / 208-230	6.20 - 6.30 / 12.60	1725	11.90"	REV.
C621 ●	O.D.P.	1-1/2	115 / 208-230	7.80 - 7.50 / 15.00	1725	12.70"	REV.
D13CA2JH9 ●	O.D.P.	1/3	115 / 208-230	8.80 / 3.90 - 4.40	1725	9.80"	REV.
EM-1790 ●	O.D.P.	1/2	115 / 208-230	7.40 / 3.70	1725	9.30"	REV.
EM-1893 ●	O.D.P.	3/4	115 / 208-230	11.40 / 5.70	1725	10.80"	REV.
EM-3187C ●	O.D.P.	1	115 / 230	14.00 / 7.00	1725	11.80"	REV.
EM-4242 ●	O.D.P.	1-1/2	115 / 208-230	22.40 / 11.20	1725	12.80"	REV.

**Cross Reference**

	Rotom	Emerson	GE	Marathon	Fasco
C455	N/A	N/A	N/A	N/A	N/A
C403	S1120	180	C216	C216	D6082
C607	S1138	N/A	N/A	N/A	N/A
C412V1	S1146	1790	C1153	B317	D6084
C654	S1168	N/A	N/A	N/A	N/A
C426V1	S1174	1893	C1156	B319	D6086
C692	N/A	N/A	N/A	N/A	N/A
C523V1	S1199	3187C	C1158	C1159	D6088
C621	S1336	4242	C1160	C1160	D6090

(●) Ball Bearing





## Features:

- Open Drip-Proof
- Rigid Base
- Class 'F' Insulation - Class 'B' Rise at Service Factor
- Reversible Rotation
- 1.15 Service Factor
- F-1 Assembly
- Aluminum End-Shields with Steel Inserts
- Light Weight Rolled Steel Frame
- Suitable for use with Inverters (VFD)
- Double Shielded Bearings (140 - 280 Frame)
- Lifting Provisions (210 Frame & Up)
- Regreasable Bearings (180 Frame & Up)
- Ball Bearings



**42/36 Month Warranty\***



## Three Phase

Stock #	HP	Volts	Amps.	RPM	Frame	Efficiency %
D1P2D •	1	208-230 / 460	3.20 / 1.50	1800	143T	85.5
D32P2D •	1-1/2	208-230 / 460	4.40 / 2.10	1800	145T	86.5
D2P2D •	2	208-230 / 460	5.90 / 2.80	1800	145T	86.5
D3P2D •	3	208-230 / 460	8.40 - 7.80 / 3.90	1800	182T	89.5
D5P2D •	5	208-230 / 460	13.80 - 13.00 / 6.50	1800	184T	89.5
D7P2D •	7-1/2	208-230 / 460	20.20 - 18.50 / 9.30	1800	213T	91.0
D10P2D •	10	208-230 / 460	26.30 - 23.80 / 11.90	1800	215T	91.7
D15P2D •	15	208-230 / 460	40.00 - 37.00 / 18.30	1800	254T	93.0
D20P2D •	20	208-230 / 460	54.00 - 49.00 / 24.40	1800	256T	93.0
D25P2D •	25	208-230 / 460	64.00 - 58.00 / 29.00	1800	284T	93.6
D30P2D •	30	208-230 / 460	77.00 - 69.00 / 34.00	1800	286T	94.1
D1P2G •	1	575	1.30	1800	143T	85.5
D32P2G •	1-1/2	575	1.70	1800	145T	86.5
D2P2G •	2	575	2.20	1800	145T	86.5
D3P2G •	3	575	3.20	1800	182T	89.5
D5P2G •	5	575	5.20	1800	184T	89.5
D7P2G •	7-1/2	575	7.20	1800	213T	91.0
D10P2G •	10	575	9.80	1800	215T	91.7
D15P2G •	15	575	14.80	1800	254T	93.0
D20P2G •	20	575	19.20	1800	256T	93.0
D25P2G •	25	575	23.00	1800	284T	94.1
D30P2G •	30	575	27.70	1800	286T	94.1

(\* Note: Warranty Period is 42 Months from Date of Manufacture or 36 Months from Date of Installation on Sine Wave Power or 30 Months from Date of Manufacture or 24 Months from Date of Installation on VFD Power, whichever occurs first.

**Features:**

- Totally Enclosed Construction
- Cast Iron Construction
- Three Year Warranty
- Dual Mounting Holes
- Cast Iron Gasketed Conduit Box
- Double Lip Seal on Both Ends
- Class 'F' Insulation - Class 'B' Temp. Rise
- NEMA MG 1, EEMAC M1-6, CSA C390
- Double Sealed 'ZZ' Bearings up to (215T Frame)
- Standard (Non-Metric) Hardware
- F-2 Field Convertible
- Conduit Box can be Rotated 90 Degrees
- Ground Lug in Conduit Box
- Rust Preventative Treated Steel Fan Cover
- VPI Insulation System
- 'C' Face Kits Available
- 20:1 V.T. / 10:1 C.T.
- Inverter Duty
- Regreasable Bearings (254T Frame & Up)
- Oversized Ball Bearings



All Models



Three Phase

Stock #	HP	Volts	Amps.	RPM	Frame	Efficiency %	C Face Kit
TCP657 ●	3	575	3.10	1800	182T	87.5	CFP18
TCP658 ●	5	575	5.20	1800	184T	87.5	CFP18
TCP659 ●	7.5	575	7.50	1800	213T	89.5	CFP21
TCP65A ●	10	575	10.00	1800	215T	89.5	CFP21
TCP65B ●	15	575	14.90	1800	254T	91.0	CFP25
TCP65C ●	20	575	19.60	1800	256T	91.0	CFP25
TCP65D ●	25	575	23.60	1800	284T	92.4	CFP28
TCP65E ●	30	575	28.30	1800	286T	92.4	CFP28
TCP65F ●	40	575	37.00	1800	324T	93.0	CFP32
TCP65G ●	50	575	46.30	1800	326T	93.0	CFP32
TCP65H ●	60	575	53.60	1800	364T	95.0	CFP36
TCP65I ●	75	575	66.60	1800	365T	95.4	CFP36
TCP65J ●	100	575	90.00	1800	405T	95.4	CFP40
TCP65K ●	125	575	109.00	1800	444T	95.4	CFP44
TCP65L ●	150	575	130.00	1800	445T	95.8	CFP44
TCP65M ●	200	575	172.00	1800	447T	96.2	CFP44

(●) Ball Bearing

# Hot Water Circulator Pump Motors



www.uem.ca

## Features:

- Open Drip-Proof
- Single Phase & Three Phase
- Mounting Bracket
- 1800 RPM
- Permanently Sealed Ball Bearings
- Replacements for OEM Motors such as Armstrong (A), Bell & Gossett (B) & Taco (T)

Type '2A' 4.67" B.C.D. fits # 2 Bearing Assembly  
 Type '2B' 5.00" B.C.D. fits # 3 & 4 Bearing Assembly  
 Type '2C' 5.875" B.C.D. fits # 5, 6 & 7 Bearing Assembly



Type 2A & 2B



Type 2C



Type 2C

## Single Phase

OMNIDRIVE®

Stock #	HP	Volts	Amps.	Type	Bearing	Rotation	Replaces
SS1350	1/12	115	2.5	2A	Ball	CWSE	R1350
SS1355	1/6	115	3.8	2A	Ball	CWSE	----
SS1352	1/6	115	3.8	2B	Ball	CWSE	R1352
SS1354	1/4	115	4.6	2B	Ball	CWSE	R1354
SS1444	1/4	115	4.6	2C	Ball	CCWSE	R1444
SS1356	1/3	115	6.0	2B	Ball	CWSE	R1356
SS1446	1/3	115	6.0	2C	Ball	CCWSE	R1446
SS1459	1/2	115-208/230	5.7/3.0-2.9	2C	Ball	REV	R1459
SS1462	3/4	115-208/230	8.2/4.7-4.2	2C	Ball	REV	R1462
C245 ^	1	230/115	6.5/13.0	4	Ball	REV	R1463

(^) Round Body - No Bracket



Type 3



Type 4

## Three Phase



Formerly A.O. Smith Electrical Products Company

Stock #	HP	Volts	Amps.	Type	Bearing	Rotation	Replaces
H1041	1/2	208-230/460	1.8-2.0/1.0	3	Ball	REV.	R1368
H1046	1/2	575	0.9	3	Ball	REV.	R1369
H1042L	3/4	208-230/460	2.7-2.8/1.4	3	Ball	REV.	R1370
H1047	3/4	575	1.1	3	Ball	REV.	R1372
H982	3/4	208-230/460	2.5-2.6/1.3	4	Sleeve	REV.	(T)
H983	3/4	208-230/460	2.5-2.6/1.3	4	Sleeve	REV.	(A,B)
H1043	1	208-230/460	3.4-3.4/1.7	3	Ball	REV.	R1371
H1048	1	575	1.4	3	Ball	REV.	R1373
H984	1	208-230/460	3.4-3.4/1.7	4	Sleeve	REV.	(A)
H985	1	208-230/460	3.4-3.4/1.7	4	Sleeve	REV.	(B)
H946	1	208-230/460	3.7-3.6/1.8	4	Sleeve	REV.	(T)
H947	1	575	1.4	4	Sleeve	REV.	(T)
H1044	1.5	208-230/460	5.7-5.6/2.8	3	Ball	REV.	R1374
H1049V1	1.5	575	2.1	3	Ball	REV.	R1375
H986	1.5	208-230/460	4.8-5.0/2.5	4	Sleeve	REV.	(A, B)
H987	2	208-230/460	6.3-6.4/3.2	4	Ball	REV.	(T)
H988	3	208-230/460	4.4/9.0-8.8	4	Ball	REV.	(T)



## OPTIDRIVE E2 - Single Phase

Digital control for Single Phase motors - AC Variable Speed Drive 0.5-1.5 HP

The Optidrive E2 Single Phase is the world's first fully digital, fully packaged variable speed drive for controlling low power single phase motors. Designed to be cost effective and easy to use, the Optidrive E2 Single Phase is for use with PSC (Permanent Split Capacitor) or Shaded-Pole Single-Phase induction motors. Optidrive E2 Single Phase uses a revolutionary motor control strategy to achieve reliable intelligent starting of single phase motors. Optidrive E2 Single Phase has only 14 standard parameters to adjust in its basic form. The Optidrive's legendary ease of use ensures quick and easy drive commissioning. For the more advanced user the extended parameter set gives access to powerful additional functionality.

Typically used for direct-drive fans and blowers with PSC (permanent-split capacitor) and shaded pole motors on single-phase power. These are typically applications with a starting torque of between 50-100% of motor full load rated torque.



Stock #	Motor Power (HP)	Volts	Output Current (A)	Frame Size
ODE-2-11005-1H012-01	0.5	110-115	7	1
ODE-2-21007-1H042-01	0.75	110-115	10.5	2
ODE-2-12005-1H012-01	0.5	200-240	4.3	1
ODE-2-12010-1H012-01	1	200-240	7	1
ODE-2-22015-1H042-01	1.5	200-240	10.5	2

### Dimensions

Size	Length (mm)	Width (mm)	Depth (mm)	Weight (kg)
1	173	82	123	1.1
2	221	104	150	2.6

## OPTIDRIVE E2 - Single Phase IP66/NEMA 4X Enclosure

Digital control for Single Phase motors - AC Variable Speed Drive 0.5-1.5 HP

All the same features & performance as above plus:

- Local potentiometer for speed control
- Drive FWD/OFF/REV switch - Programmable for Hand / Auto (Local / Remote) applications
- Built-In Disconnect - Provides the ability to isolate the motor for maintenance and servicing.



Stock #	Motor Power (HP)	Volts	Output Current (A)	Frame Size
ODE-2-11005-1H01Y-01	0.5	110-115	7	1
ODE-2-21007-1H04Y-01	0.75	110-115	10.5	2
ODE-2-12005-1H01Y-01	0.5	200-240	4.3	1
ODE-2-12010-1H01Y-01	1	200-240	7	1
ODE-2-22015-1H04Y-01	1.5	200-240	10.5	2

### Dimensions

Size	Length (mm)	Width (mm)	Depth (mm)	Weight (kg)
1	232	161	175	2.8
2	257	188	187	4.6

## OPTIDRIVE E2 - Three Phase IP20 Enclosure

*Ease of Use - AC Variable Speed Drive 0.5-15 HP*

Rich in features the Optidrive E2 is the most commercially competitive Optidrive in the Optidrive family. Innovative and compact the Optidrive E2 range combines good looks with robustness, reliability and easy to use performance. The product is dedicated to low power applications where total costs are ultra-competitive, including: Competitive purchase price, Low installation costs, Low commissioning costs & Low technical support costs. Optidrive E2 has only 14 standard parameters to adjust in its basic form, thus Optidrive's legendary ease of use could not be easier or quicker to get started with.



Stock #	Motor Power (HP)	Volts	Output Current (A)	Frame Size
ODE-2-11005-1H012 #	0.5	110-115	2.3	1
ODE-2-11010-1H012 #	1	110-115	4.3	1
ODE-2-21015-1H042 #	1.5	110-115	5.8	2
ODE-2-12005-1H012 #	0.5	200-240	2.3	1
ODE-2-12010-1H012 #	1	200-240	4.3	1
ODE-2-12020-1H012 #	2	200-240	7	1
ODE-2-22030-1H042 #	3	200-240	10.5	2
ODE-2-32050-1H042 #	5	200-240	18	3
ODE-2-12005-3H012	0.5	200-240	2.3	1
ODE-2-12010-3H012	1	200-240	4.3	1
ODE-2-12020-3H012	2	200-240	7	1
ODE-2-22030-3H042	3	200-240	10.5	2
ODE-2-32050-3H042	5	200-240	18	3
ODE-2-14010-3H012	1	380-480	2.2	1
ODE-2-14020-3H012	2	380-480	4.1	1
ODE-2-24020-3H042	2	380-480	4.1	2
ODE-2-24030-3H042	3	380-480	5.8	2
ODE-2-24050-3H042	5	380-480	9.5	2
ODE-2-34075-3H042	7.5	380-480	14	3
ODE-2-34100-3H042	10	380-480	18	3
ODE-2-34150-3H042	15	380-480	24	3

(#) Indicates Single Phase Input / Three Phase Output

### Dimensions

Size	Length (mm)	Width (mm)	Depth (mm)	Weight (kg)
1	173	82	123	1.1
2	221	104	150	2.6
3	261	131	175	4.0

## OPTIDRIVE E2 - Three Phase IP66/NEMA 4X Enclosure

*Ideal for washdown applications - AC Variable Speed Drive 0.5-10 HP*

Expanding on the success of the Optidrive E2, IP20 and IP55/NEMA 12 products, the Optidrive E2 IP66/NEMA 4X is ideal for food and beverage as well as pharmaceutical applications. The IP66 / NEMA 4X enclosure is a cost-effective, washdown duty Optidrive for low power situations. Ready for high-pressure washdown, the IP66 / NEMA 4X can mount directly on your processing equipment.



Stock #	Motor Power (HP)	Volts	Output Current (A)	Frame Size
ODE-2-11005-1H01Y #	0.5	110-115	2.3	1
ODE-2-11010-1H01Y #	1	110-115	4.3	1
ODE-2-21015-1H04Y #	1.5	110-115	5.8	2
ODE-2-12005-1H01Y #	0.5	200-240	2.3	1
ODE-2-12010-1H01Y #	1	200-240	4.3	1
ODE-2-12020-1H01Y #	2	200-240	7	1
ODE-2-22030-1H04Y #	3	200-240	10.5	2
ODE-2-32050-1H04Y #	5	200-240	18	3
ODE-2-12005-3H01Y	0.5	200-240	2.3	1
ODE-2-12010-3H01Y	1	200-240	4.3	1
ODE-2-12020-3H01Y	2	200-240	7	1
ODE-2-22030-3H04Y	3	200-240	10.5	2
ODE-2-32050-3H04Y	5	200-240	18	3
ODE-2-14010-3H01Y	1	380-480	2.2	1
ODE-2-14020-3H01Y	2	380-480	4.1	1
ODE-2-24020-3H04Y	2	380-480	4.1	2
ODE-2-24030-3H04Y	3	380-480	5.8	2
ODE-2-24050-3H04Y	5	380-480	9.5	2
ODE-2-34075-3H04Y	7.5	380-480	14	3
ODE-2-34100-3H04Y	10	380-480	18	3

(#) Indicates Single Phase Input / Three Phase Output

### Dimensions

Size	Length (mm)	Width (mm)	Depth (mm)	Weight (kg)
1	232	161	175	2.8
2	257	188	187	4.6
3	310	210.5	243	7.4



### OPTIDRIVE PLUS 3GV - Three Phase IP20 Enclosure

3GV Technology combines full torque down to 0 Hz. - AC Variable Speed Drive 1-60HP-600V

Optidrive Plus 3GV is the natural evolution of the Optidrive family adding ultimate motor control to established Optidrive benchmarks of control and ease of use. 3GV technology delivers 200% torque down to 0.0Hz allowing this unique open loop product to be used without any feedback device in many traditional closed loop applications. Only the motor name plate data is required to achieve optimum performance, the drive continuously and automatically determines and tracks the key motor characteristics required for vector control. Optidrive Plus 3GV can be commissioned using the unique Optiwand PDA software designed for use on pocket pc's. Communication takes place without wires using infrared light to quickly and accurately transfer data and monitor motor performance.



Stock #	Motor Power (HP)	Volts	Output Current (A)	Frame Size
ODP-25010 <	1	575-600	1.7	2
ODP-25020 <	2	575-600	3.1	2
ODP-25030 <	3	575-600	4.1	2
ODP-25050 <	5	575-600	6.1	2
ODP-25075 <	7.5	575-600	9	2
ODP-35100	10	575-600	14	3
ODP-35150	15	575-600	18	3
ODP-35200	20	575-600	24	3
ODP-45300	25/30	575-600	39	4
ODP-45400	40	575-600	46	4
ODP-45600	50/60	575-600	62	4

(<) Requires External Input Line Reactor

#### Dimensions

Size	Length (mm)	Width (mm)	Depth (mm)	Weight (kg)
2	260	100	175	2.6
3	260	171	175	5.3
4	520	340	220	28

### OPTIDRIVE PLUS 3GV - Three Phase IP55/NEMA 12 Enclosure

3GV Technology combines full torque down to 0 Hz. - AC Variable Speed Drive 1-7.5HP-600V

All the same features & performance as above plus:

- Local potentiometer for speed control
- Drive FWD/OFF/REV switch - Programmable for Hand / Auto (Local / Remote) applications
- Built-In Disconnect - Provides the ability to isolate the motor for maintenance and servicing.



Stock #	Motor Power (HP)	Volts	Output Current (A)	Frame Size
ODP-25010-I55S <	1	575-600	1.7	2
ODP-25020-I55S <	2	575-600	3.1	2
ODP-25030-I55S <	3	575-600	4.1	2
ODP-25050-I55S <	5	575-600	6.1	2
ODP-25075-I55S <	7.5	575-600	9	2

(<) Requires External Input Line Reactor

#### Dimensions

Size	Length (mm)	Width (mm)	Depth (mm)
2	310	165	176

## OPTIDRIVE HVAC - Three Phase IP20 Enclosure

AC Variable Speed Drive 1-350 HP

Optidrive HVAC sets a new standard for dedicated fan & pump control.

Whilst retaining the ease of use traditionally associated with Invertek Drives, Optidrive HVAC has an innovative design, combined with robust performance to provide powerful flow control and reliability in a compact drive. Example savings based on a 45kW load using Optidrive HVAC compared to direct on-line control, an estimated 20% reduction in speed results in potential energy savings of 50%.

The Optidrive HVAC provides powerful and flexible control that is ideal for applications such as centrifugal pumps and fan units, where large and immediate energy savings can almost always be found.

575-600V  
COMING  
SOON



Stock #	Motor Power (HP)	Volts	Output Current (A)	Frame Size
ODV-2-22010-1HF12SN #	1	200-240	4.3	2
ODV-2-22020-1HF12SN #	2	200-240	7	2
ODV-2-22030-1HF12SN #	3	200-240	10.5	2
ODV-2-22010-3HF12SN	1	200-240	4.3	2
ODV-2-22020-3HF12SN	2	200-240	7	2
ODV-2-22030-3HF12SN	3	200-240	10.5	2
ODV-2-32050-3HF12SN	5	200-240	18	3
ODV-2-32075-3HF12SN	7.5	200-240	24	3
ODV-2-24010-3HF12SN	1	380-480	2.2	2
ODV-2-24020-3HF12SN	2	380-480	4.1	2
ODV-2-24030-3HF12SN	3	380-480	5.8	2
ODV-2-24050-3HF12SN	5	380-480	9.5	2
ODV-2-34075-3HF12SN	7.5	380-480	14	3
ODV-2-34100-3HF12SN	10	380-480	18	3
ODV-2-34150-3HF12SN	15	380-480	24	3

(#) Indicates Single Phase Input / Three Phase Output

### Dimensions

Size	Length (mm)	Width (mm)	Depth (mm)	Weight (kg)
2	221	112	185	1.8
3	261	131	205	3.5

## OPTIDRIVE HVAC - Three Phase IP55 & IP66 Enclosure

AC Variable Speed Drive 1-350 HP

All the same features & performance as the OPTIDRIVE HVAC IP20.

**575-600V  
COMING  
SOON**



Stock #	Motor Power (HP)	Volts	Output Current (A)	Frame Size
ODV-2-22010-1HF1DTN #	1	200-240	4.3	2 (IP66)
ODV-2-22020-1HF1DTN #	2	200-240	7	2 (IP66)
ODV-2-22030-1HF1DTN #	3	200-240	10.5	2 (IP66)
ODV-2-22010-3HF1DTN	1	200-240	4.3	2 (IP66)
ODV-2-22020-3HF1DTN	2	200-240	7	2 (IP66)
ODV-2-22030-3HF1DTN	3	200-240	10.5	2 (IP66)
ODV-2-32050-3HF1DTN	5	200-240	18	3 (IP66)
ODV-2-42075-3HF1NTN	7.5	200-240	24	4 (IP55)
ODV-2-42100-3HF1NTN	10	200-240	30	4 (IP55)
ODV-2-42150-3HF1NTN	15	200-240	46	4 (IP55)
ODV-2-52020-3HF1NTN	20	200-240	61	5 (IP55)
ODV-2-52025-3HF1NTN	25	200-240	72	5 (IP55)
ODV-2-24010-3HF1DTN	1	380-480	2.2	2 (IP66)
ODV-2-24020-3HF1DTN	2	380-480	4.1	2 (IP66)
ODV-2-24030-3HF1DTN	3	380-480	5.8	2 (IP66)
ODV-2-24050-3HF1DTN	5	380-480	9.5	2 (IP66)
ODV-2-34075-3HF1DTN	7.5	380-480	14	3 (IP66)
ODV-2-34100-3HF1DTN	10	380-480	18	3 (IP66)
ODV-2-44150-3HF1NTN	15	380-480	24	4 (IP55)
ODV-2-44200-3HF1NTN	20	380-480	30	4 (IP55)
ODV-2-44250-3HF1NTN	25	380-480	39	4 (IP55)
ODV-2-44300-3HF1NTN	30	380-480	46	4 (IP55)
ODV-2-54040-3HF1NTN	40	380-480	61	5 (IP55)
ODV-2-54050-3HF1NTN	50	380-480	72	5 (IP55)
ODV-2-54060-3HF1NTN	60	380-480	90	5 (IP55)
ODV-2-64075-3HF1NTN	75	380-480	110	6 (IP55)

(#) Indicates Single Phase Input / Three Phase Output

**30HP TO 100HP 200-240V & 100HP TO 350HP 380-480V AVAILABLE ON REQUEST.  
PLEASE GO TO WWW.UEM.CA FOR FURTHER INFORMATION.**

### Dimensions

Size	Length (mm)	Width (mm)	Depth (mm)	Weight (kg)
2	257	188	239.5	4.8
3	310	211	251.3	7.3
4	440	173	230	11.5
5	540	235	270	22.5

## OPTIDRIVE P2 - Three Phase IP20 Enclosure

AC Variable Speed Drive 1-350 HP

The all new Optidrive P2 provides world leading control for both standard induction motors and permanent magnet motors.

Open loop vector control of standard induction motors provides up to 200% torque from zero speed. Open and closed loop control of the latest generation of high efficiency PM motors. Closed loop encoder feedback capability for standard induction motors. Extensive I/O and communications interface capabilities ensure the drive can be integrated quickly and efficiently into a wide variety of control systems. A simple parameter structure and carefully selected factory settings ensure fast and easy commissioning..

575-600V  
COMING  
SOON



Stock #	Motor Power (HP)	Volts	Output Current (A)	Frame Size
ODP-2-22010-1HF42SN #	1	200-240	4.3	2
ODP-2-22020-1HF42SN #	2	200-240	7	2
ODP-2-22030-1HF42SN #	3	200-240	10.5	2
ODP-2-22010-3HF42SN	1	200-240	4.3	2
ODP-2-22020-3HF42SN	2	200-240	7	2
ODP-2-22030-3HF42SN	3	200-240	10.5	2
ODP-2-32050-3HF42SN	5	200-240	18	3
ODP-2-32075-3HF42SN	7.5	200-240	24	3
ODP-2-24010-3HF42SN	1	380-480	2.2	2
ODP-2-24020-3HF42SN	2	380-480	4.1	2
ODP-2-24030-3HF42SN	3	380-480	5.8	2
ODP-2-24050-3HF42SN	5	380-480	9.5	2
ODP-2-34075-3HF42SN	7.5	380-480	14	3
ODP-2-34100-3HF42SN	10	380-480	18	3
ODP-2-34150-3HF42SN	15	380-480	24	3

(#) Indicates Single Phase Input / Three Phase Output

### Dimensions

Size	Length (mm)	Width (mm)	Depth (mm)	Weight (kg)
2	221	112	185	1.8
3	261	131	205	3.5



## OPTIDRIVE P2 - Three Phase IP55 & IP66 Enclosure

AC Variable Speed Drive 1-350 HP

All the same features & performance as the OPTIDRIVE P2 IP20 Enclosure.

- IP55/NEMA 12 'Un-Switched'
- IP66/NEMA 4X 'Switched' includes:
  - Local potentiometer for speed control
  - Drive FWD/OFF/REV switch - Programmable for Hand / Auto (Local / Remote) applications
  - Built-In Disconnect - Provides the ability to isolate the motor for maintenance and servicing.

575-600V  
COMING  
SOON



Stock #	Motor Power (HP)	Volts	Output Current (A)	Frame Size
ODP-2-22010-1HF4YSN #	1	200-240	4.3	2 (IP66)
ODP-2-22020-1HF4YSN #	2	200-240	7	2 (IP66)
ODP-2-22030-1HF4YSN #	3	200-240	10.5	2 (IP66)
ODP-2-22010-3HF4YSN	1	200-240	4.3	2 (IP66)
ODP-2-22020-3HF4YSN	2	200-240	7	2 (IP66)
ODP-2-22030-3HF4YSN	3	200-240	10.5	2 (IP66)
ODP-2-32050-3HF4YSN	5	200-240	18	3 (IP66)
ODP-2-42075-3HF4NSN	7.5	200-240	24	3 (IP66)
ODP-2-42100-3HF4NSN	10	200-240	30	4 (IP55)
ODP-2-42150-3HF4NSN	15	200-240	46	4 (IP55)
ODP-2-52020-3HF4NSN	20	200-240	61	5 (IP55)
ODP-2-52025-3HF4NSN	25	200-240	72	5 (IP55)
ODP-2-24010-3HF4YSN	1	380-480	2.2	2 (IP66)
ODP-2-24020-3HF4YSN	2	380-480	4.1	2 (IP66)
ODP-2-24030-3HF4YSN	3	380-480	5.8	2 (IP66)
ODP-2-24050-3HF4YSN	5	380-480	9.5	2 (IP66)
ODP-2-34075-3HF4YSN	7.5	380-480	14	3 (IP66)
ODP-2-34100-3HF4YSN	10	380-480	18	3 (IP66)
ODP-2-44150-3HF4NSN	15	380-480	24	4 (IP55)
ODP-2-44200-3HF4NSN	20	380-480	30	4 (IP55)
ODP-2-44250-3HF4NSN	25	380-480	39	4 (IP55)
ODP-2-44300-3HF4NSN	30	380-480	46	4 (IP55)
ODP-2-54040-3HF4NSN	40	380-480	61	5 (IP55)
ODP-2-54050-3HF4NSN	50	380-480	72	5 (IP55)
ODP-2-64060-3HF4NSN	60	380-480	90	6 (IP55)
ODP-2-64075-3HF4NSN	75	380-480	110	6 (IP55)

(#) Indicates Single Phase Input / Three Phase Output

30HP TO 100HP 200-240V & 100HP TO 350HP 380-480V AVAILABLE ON REQUEST.  
PLEASE GO TO [WWW.UEM.CA](http://www.uem.ca) FOR FURTHER INFORMATION.

### Dimensions

Size	Length (mm)	Width (mm)	Depth (mm)	Weight (kg)
2	257	188	239.5	4.8
3	310	211	251.3	7.3
4	440	173	230	11.5
5	540	235	270	22.5
6	865	330	340	50



**MORE MOTOR KNOWLEDGE...  
MORE MOTOR EXPERIENCE...  
MORE MOTOR VARIETY...  
AT YOUR SERVICE**

**WE ALSO OFFER:**



**UNIT BEARING MOTORS**



**MORE DEM REPLACEMENT MOTORS**



**ECM REFRIGERATION MOTORS**



**MORE BLOWERS**



**PM & SHUNT WOUND DC MOTORS**



**MORE 3.3" DIAMETER MOTORS**



**COMPRESSOR DUTY MOTORS**



**MORE 4" DIAMETER MOTORS**



**PUMP MOTORS**



**MORE 5" DIAMETER MOTORS**



**GENERAL PURPOSE MOTORS (IHP)**



**MORE 48 FRAME MOTORS**



**ELEVATOR DUTY MOTORS**



**MORE 56 FRAME MOTORS**



**FARM DUTY MOTORS**



**MORE SKELETON MOTORS**

Available from:



**WWW.UEM.CA**

© Universal Electric Motors. All Rights Reserved.